

杭州碱泵有限公司
HANGZHOU ALKALI PUMP CO.,LTD.
浙江华泵科技有限公司
HB PUMP CO., LTD.

销售部电话: 0571-89905601/89905603
销售部传真: 0571-89905602
E-mail:sales@hbgroups.com
http://www.hbgroups.com
地址: 杭州市三墩镇西湖科技园西园五路12号
邮编: 310030

International Clients
Tel:+86 571 89900102
Fax:+86 571 89905602
E-mail: overseas@hbgroups.com
http://www.hbgroups.com
Add:No.12 Xiyuan 5 Road, Westlake Science & Technology
Zone, Sandun Town, Hangzhou
Post code: 310030

版本号: 2019.10



IFK[®] 系列塑料离心泵

IFK Series Plastic Centrifugal Pump

参照ISO5199、ASMEB73.3标准
Conform to ISO5199/ASME B73.3 standard

输送介质温度-20°C~175°C
Operation temperature -20°C~175°C

挠性联轴器传动
Flexible coupling

最大工作压力1.6MPa
Max working pressure 1.6MPa

轴及轴承35、45、60、75
Pump shaft and bearing 35/45/60/75

塑料离心泵

Plastic Centrifugal Pump

主要应用于 Application

- | | |
|---|---|
| <input checked="" type="checkbox"/> 碱和无机盐 | <input checked="" type="checkbox"/> Alkali and inorganic salts |
| <input checked="" type="checkbox"/> 有色金属冶炼 | <input checked="" type="checkbox"/> Non-ferrous metal smelting |
| <input checked="" type="checkbox"/> 钢铁工业 | <input checked="" type="checkbox"/> Iron and steel industry |
| <input checked="" type="checkbox"/> 制酸工业 | <input checked="" type="checkbox"/> Acid industry |
| <input checked="" type="checkbox"/> 石油化工 | <input checked="" type="checkbox"/> Petrochemical industry |
| <input checked="" type="checkbox"/> 合成纤维和塑料工业 | <input checked="" type="checkbox"/> Synthetic fiber and plastics industry |
| <input checked="" type="checkbox"/> 造纸工业 | <input checked="" type="checkbox"/> Paper making industry |
| <input checked="" type="checkbox"/> 化肥工业 | <input checked="" type="checkbox"/> Fertilizer industry |
| <input checked="" type="checkbox"/> 发酵工业 | <input checked="" type="checkbox"/> Fermentation industry |
| <input checked="" type="checkbox"/> 环境保护 | <input checked="" type="checkbox"/> Environment protection |

用法 Usage

这些泵被设计用于输送各类酸、碱、盐、油等清液或料浆，在低于175°C的介质中可取代316L、蒙乃尔合金、哈氏合金、钛及高合金不锈钢、超低碳不锈钢等。设计符合ISO5199标准。

These pumps are designed to convey various kinds of clear liquids such as acid, alkali, salt and oil etc or slurry. They can replace 316L, monel alloy, hastelloy, titanium and high alloy stainless steel and ultra-low carbon stainless steel etc in the medium lower than 175. Their design conforms to ISO 5199 standard.

法兰标准 Flange standard	EN 1092-1	ASME/ANSI B16.5
公称压力 Nominal pressure	PN16	class150

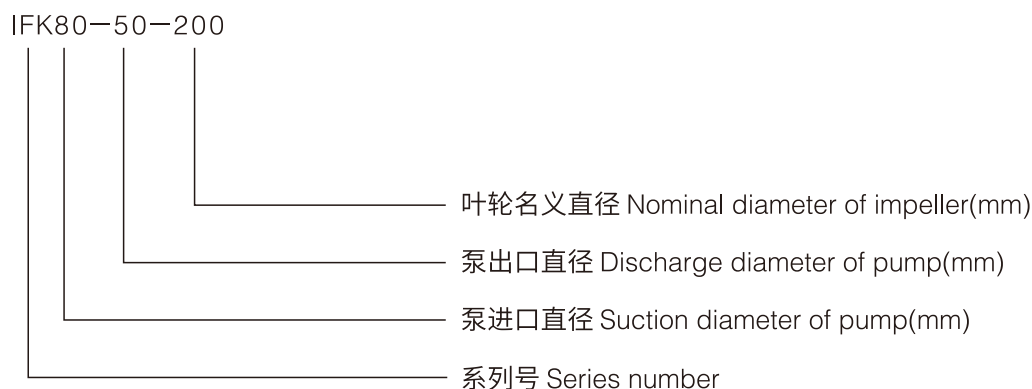
材料 Material

与介质接触的过流部件，采用衬塑工艺，常用衬塑材料如下：

Plastic lining technology will be applied for flow passage components contacting with medium. Plastic lining materials usually used are as follows.

- | | |
|---|---|
| <input checked="" type="checkbox"/> FEP | <input checked="" type="checkbox"/> FEP |
| <input checked="" type="checkbox"/> PFA | <input checked="" type="checkbox"/> PFA |

泵型号说明 Pump model instruction



泵运行数据 Operating data

流量 (3~600) m³/h
扬程 (5~80) m
温度 (-20~175) °C

Flow rate (3~600)m³/h
Total heads (5~80)m
Operating temperature (-20~175)°C

现场标准条件 Standard conditions at site

- 连续运行过程中的相对湿度不大于90%
- 环境温度不高于40°C，不低于4°C
- 海拔高度不超过1000m

当场地条件与上述规定不符时必须加以说明。

- Relative humidity during continuous operation max. 90%
- Ambient temperature max.40°C, min.4°C
- Permissible altitude up to 1000m above sea level

Deviations from the site conditions specified herein must already be disclosed in the inquiry.

流量 Flow rate

离心泵的允许运行范围取决于：

- 叶轮形状
- 转速
- 振动
- 介质特性
- 轴承及轴载荷
- 泵壳的散热及材料的抗腐蚀性
- 工况进口净压头与泵汽蚀余量

适用工作范围在性能曲线和泵数据表中表示。

The permissible operating range of centrifugal pumps depends on:

- Impeller shape
- Speed
- Vibration
- Medium characteristics
- Bearing and shaft load
- Heat dissipation-particularly with regard to insulated volute casings and the corrosion resistance of materials
- The net positive suction head of the working condition and NPSH

The operating range applicable to the pump is indicated in the individual characteristic curves and the pump data sheet.

出口压力 Outlet pressure

离心泵出口压力取决于：

- 泵入口压力
- 选定叶轮直径的最大总扬程
- 泵送介质的密度

The pump outlet pressure at the outlet nozzle depends on:

- The pump inlet pressure
- The maximum total head of the selected impeller diameter
- The density of the medium to be pumped

最大泵出口压力P2max op计算公式如下:

$$P2max\ op = P1max\ ip + \rho * g * H * 10^{-5}$$

P2max op为最大出口压力

P1max ip为最大进口压力

ρ 为泵送介质密度

g 为引力常数

H 为零流量下的最大总扬程或在选定叶轮直径下性能曲线峰值

泵选择和运行必须确保泵出口最大压力绝不能超过工作温度下泵体最大允许工作压力。这也适用于排放阀关闭时的调试。

The maximum pump outlet pressure P2max op is calculated using the formula:

$$P2max\ op = P1max\ ip + \rho * g * H * 10^{-5}$$

P2max op = maximum pump outlet pressure(bar)

P1max ip = maximum pump inlet pressure(bar)

ρ = density of the medium to be pumped(kg/m³)

g = gravitation constant(m/s²)

H = maximum total head at zero flow or at the peak of the pump's characteristic curve at the selected impeller diameter(m)

Pumps must be selected and operated in a way which ensures that the maximum pump outlet pressure does by no means exceed the maximum permissible operating pressure of the casing pall wc at operating temperature. This also applies to commissioning while the diacharge vavle is closed.

压力和温度限制 Pressure and temperature limitations

泵体和泵盖的最大工作压力取决于工作温度:

The maximum casing operating pressure pall wc of the casing and the casing cover depends on the operating temperature:

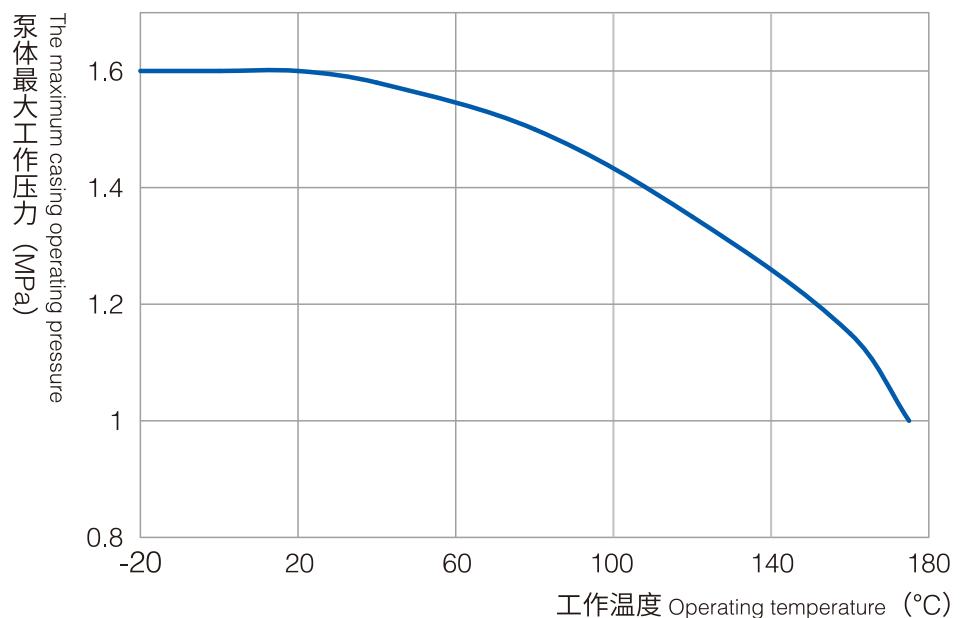


图1: 泵最大允许工作压力

Fig.1: maximum permissible casing operating pressure pall wc.

转速和 叶轮直径限制 Speed and impeller diameter limitations

泵轴运行速度不能超过叶轮最大允许周转速，这相当于48m/s。

The operating speed of the pump shaft must not exceed the maximum permissible peripheral speed of the impeller, which corresponds to 48m/s.

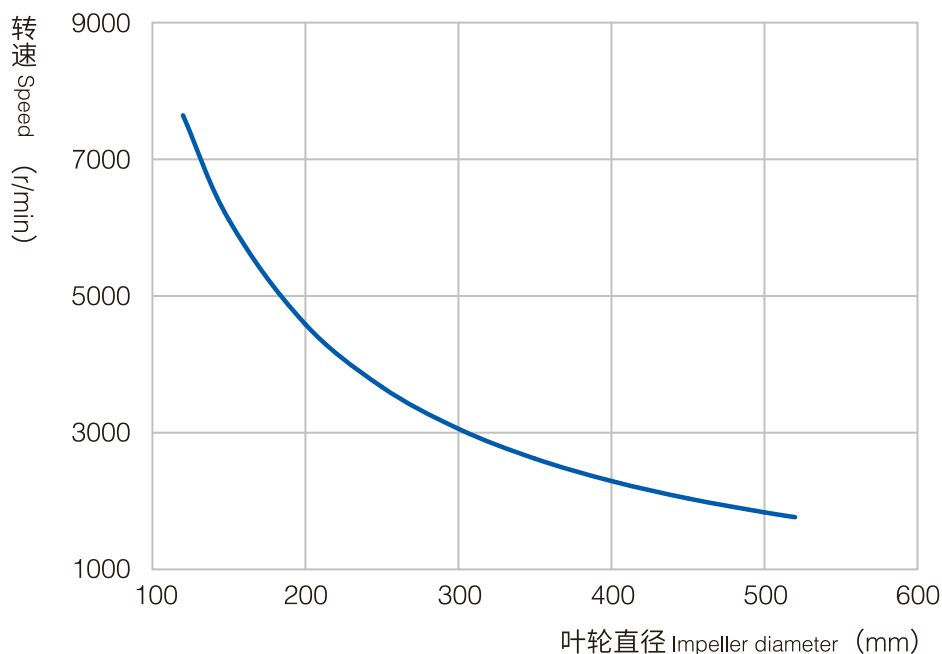


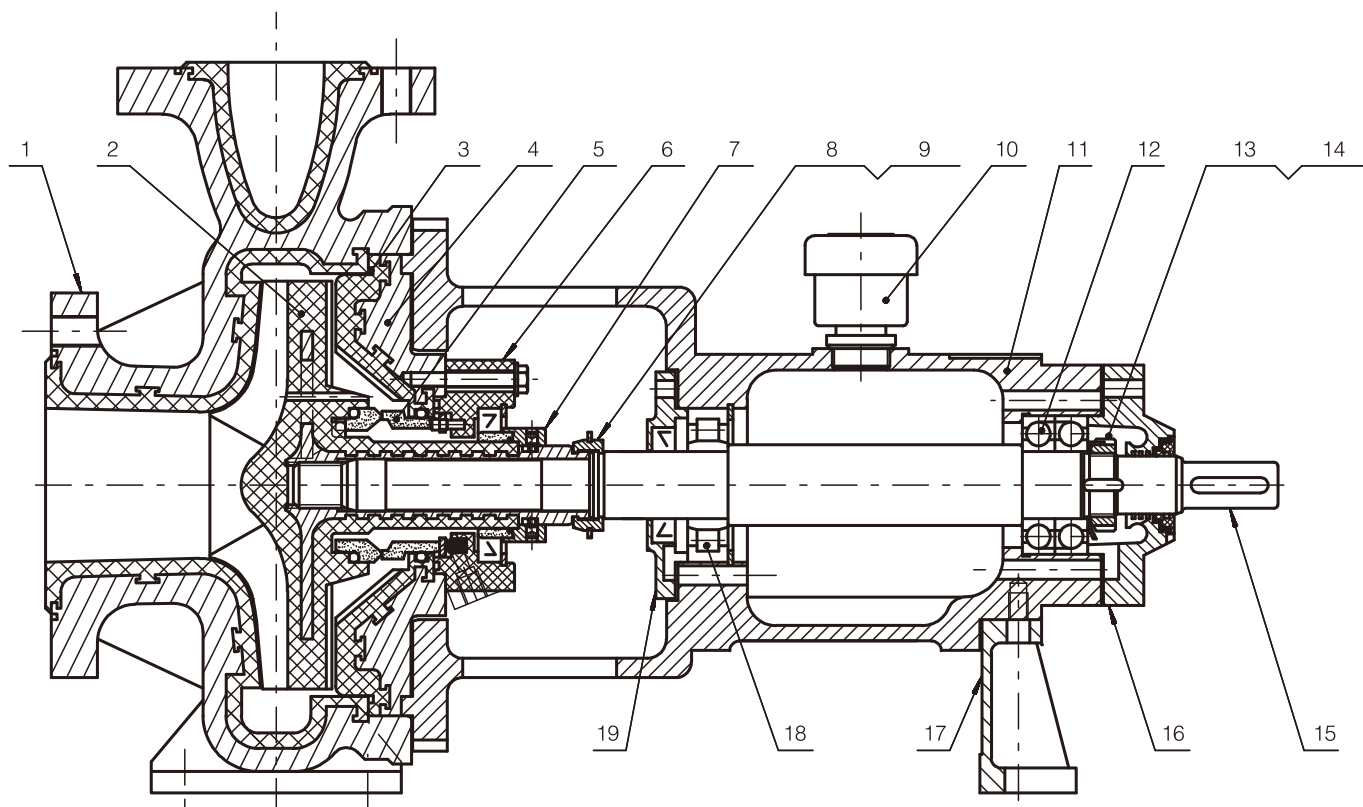
图2: 最大允许泵轴运行速度

Fig.2: maximum permissible shaft speed

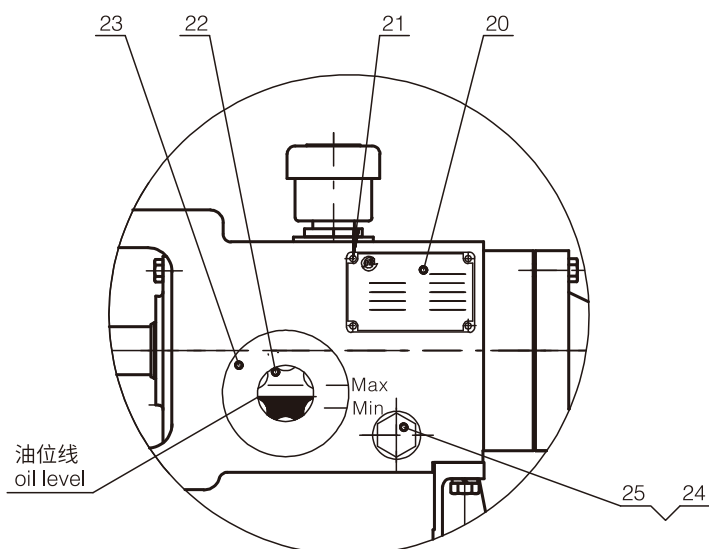
泵的结构 *STRUCTURE*

IFK塑料离心泵是一种单级单吸悬臂式离心泵，过流部件采用衬塑工艺，避免了塑料件强度不足的问题。泵体为轴向吸入径向排出，泵体上铸出支撑脚，直接固定在底座上。泵盖通过止口固定在悬架体上，泵体和悬架体将泵盖夹紧。技术要求符合ISO5199标准。

As a single-stage, single-suction cantilver type centrifugal pump, IFK plastic centrifugal pump uses plastic lining technology for its flow passage components, thus solve the insufficient strength problem of plastic components. Suction in axial direction and discharge in radial direction for pump casing. Pump casing casted with supporting legs which can be directly fastened on pump seat. Pump cover is fixed on suspension body by spigot and pump cover is held firmly by pump casing and suspension body. Technical requirement of the pump conforms to ISO 5199 standard.

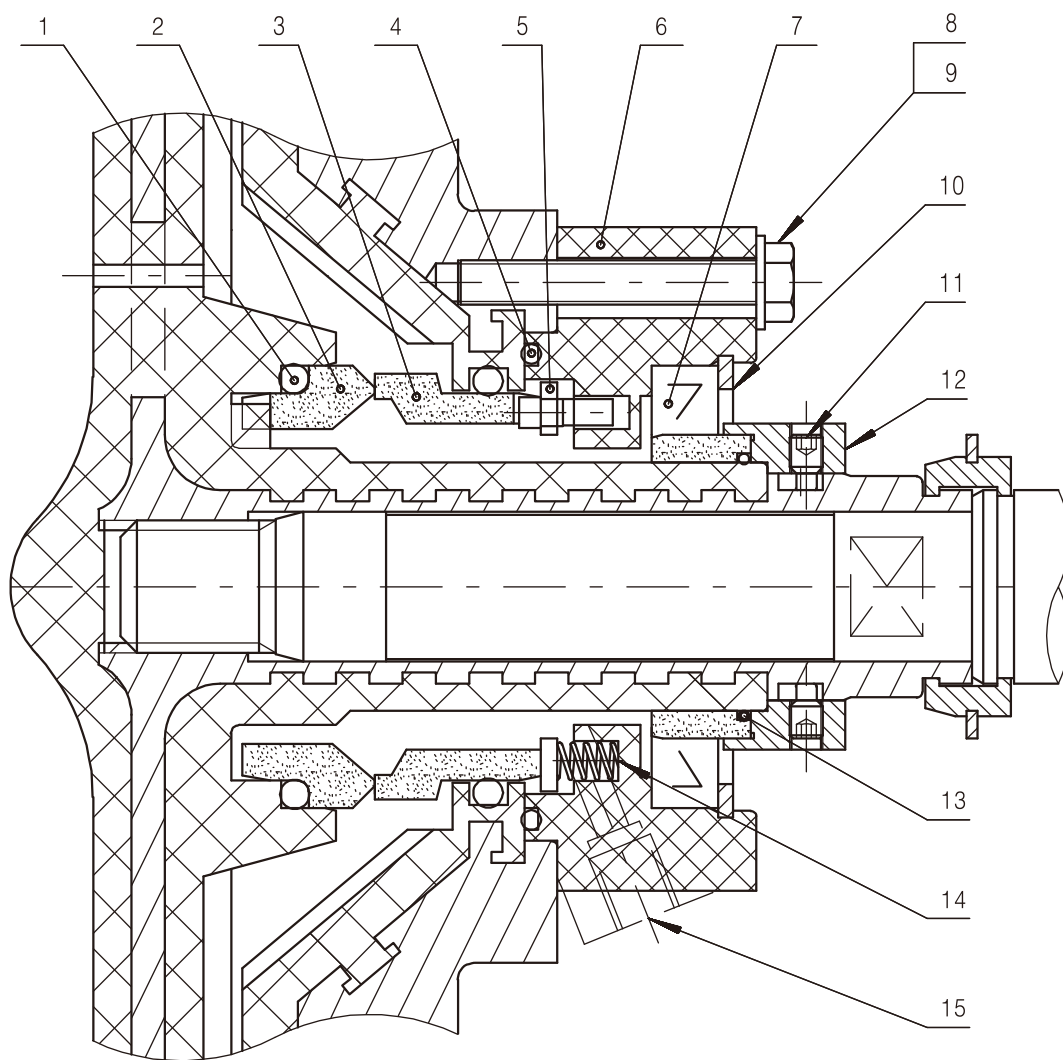


- | | | |
|---------------------------------|------------------------------|--|
| 1 泵体 / pump casing | 8 抱箍 / hoop | 15 轴 / shaft |
| 2 叶轮 / impeller | 9 轴用弹性挡圈 / circlip for shaft | 16 轴承后盖 / rear bearing cap |
| 3 O型圈 / O-ring | 10 气孔盖 / air vent cover | 17 支架 / bracket |
| 4 泵盖 / pump cover | 11 悬架体 / frame | 18 前轴承 / front bearing |
| 5 机械密封 / mechanical seal | 12 后轴承 / back bearing | 19 轴承前盖 / front bearing cap |
| 6 静环压盖 / seal end gland | 13 止动垫圈 / lock washer | 20 铭牌 / nameplate |
| 7 止退块组件 / thrust block assembly | 14 小圆螺母 / small round nut | 21 铆钉 / rivet |
| | | 22 油标 / circular oil |
| | | 23 十字沉头螺钉 / cross recessed counter sunk head screw |
| | | 24 管堵 / pipe plug |
| | | 25 垫 / gasket |



泵的密封

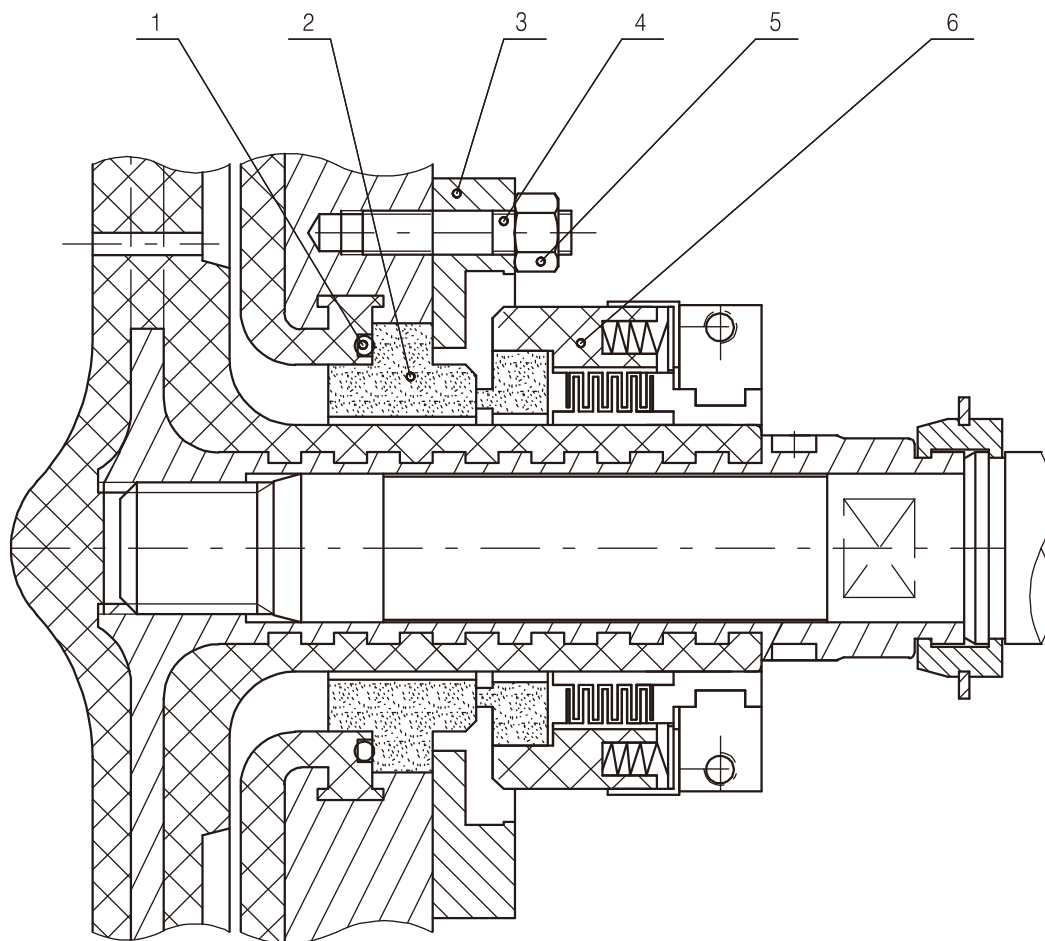
IFK塑料离心泵的轴封可选用我公司专利产品170型机械密封或WB2型机械密封。



■ 170

1	O型圈 / O-ring	9	平垫圈 / flat washer
2	动环 / dynamic ring	10	孔用挡圈 / circlips for hole
3	静环 / static ring	11	紧定螺钉 / set screw
4	O型圈 / O-ring	12	止退块组件 / retaining block
5	推环 / thrust ring	13	O型圈 / O-ring
6	静环压盖 / seal end gland	14	弹簧 / spring
7	骨架油封 / skeleton oil seal	15	管接头 / pipe joint
8	螺栓 / bolt		

Our company's patented product Type 170 mechanical seal and Type WB2 mechanical seal will be used as the shaft seal of IFK plastic centrifugal pump. Its structure is as follows:



■ WB2

- | | |
|-------------------------|-------------------------|
| 1 O型圈 / O-ring | 4 双头螺柱 / stud bolt |
| 2 静环 / static ring | 5 螺母 / nut |
| 3 静环压盖 / seal end gland | 6 集装动环组件 / dynamic ring |

结构优化设计，操作安全性高 维修方便，使用寿命长

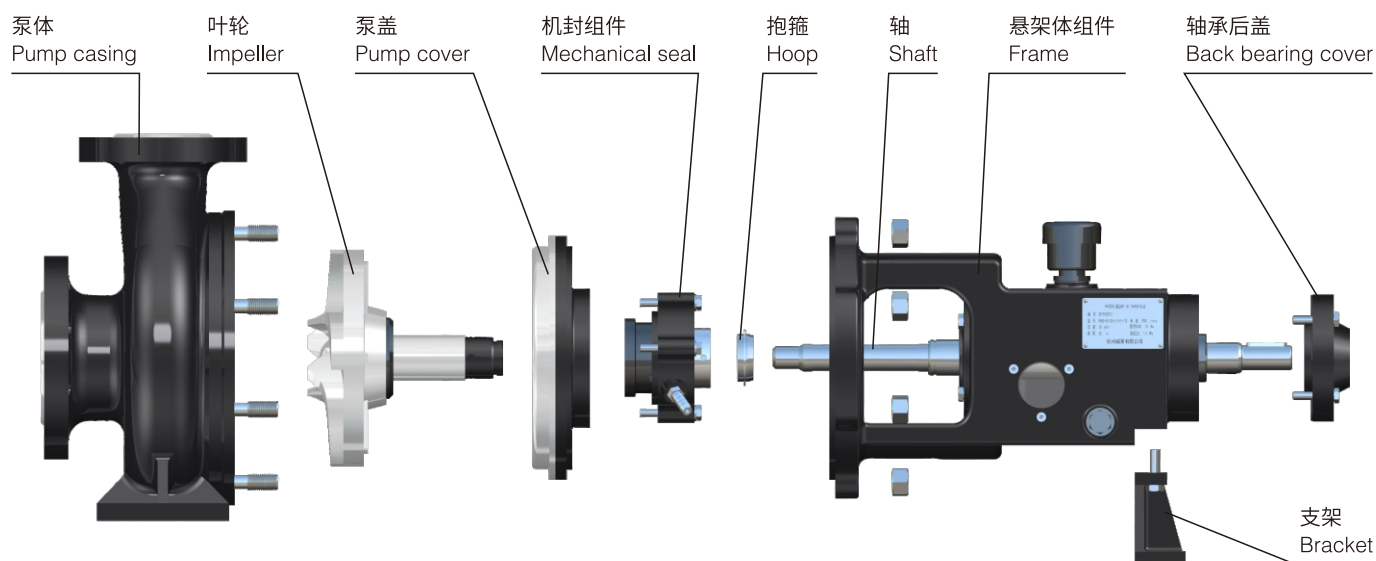
Optimized design, safe operation easy maintenance, long running life

后开门形式，检修时无需拆卸进出口管道，灵活方便，安装简易。

产品零件高度互换，降低用户备件库存。

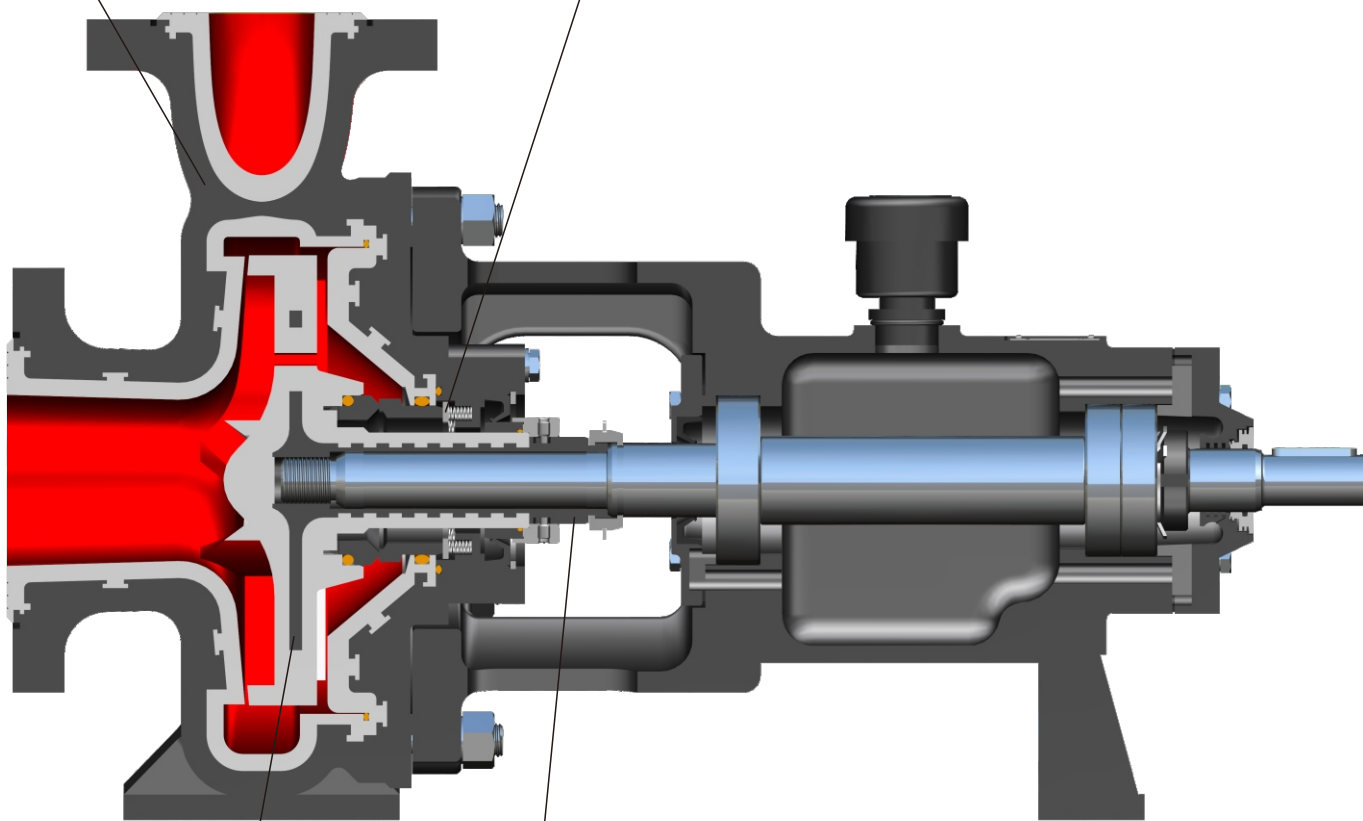
Since it is rear opening door, it is unnecessary to remove pipes at inlet and outlet during maintenance and it's easy for installation.

Product spare parts are highly replaceable, so that the users' stock of spare parts will be reduced.



球墨铸铁衬塑泵体，安全可靠
SG cast-iron plastic lining pump casing is safe and reliable.

塑料泵专用170型或WB2型机械密封可选
Type 170 mechanical seal and Type WB2 mechanical seal



专利防反转松脱轴传动结构
Patented reversal, loosening and off axis proof transmission structure.

高强度叶轮嵌件，极大减小叶轮交变载荷的变形
High strength impeller blade embedded parts will greatly reduce the deformation caused by alternate load of impeller.

结构优化设计，操作安全性高 维修方便，使用寿命长

泵体与泵盖为球墨铸铁衬塑结构，铸铁外壳承受系统压力和管道力，避免了全塑料结构强度低的缺陷。衬塑不添加填充物，耐化学腐蚀性更好。

叶轮内嵌有高强度钢件结构，极大减小了叶轮在运转时受到交变载荷作用下的变形，运行更稳定、可靠。

加厚塑料衬里，有效延长不同气候，不同使用条件和工况下的使用寿命。

传动结构采用我公司专利防反转轴传动结构，提高泵使用可靠性，消除叶轮松脱危险。

轴封可选用我公司专利170型机械密封或WB2型机械密封，历经多次优化和多年用户检验，适用性更广，寿命更长。

Pump casing and pump cover are in SG cast-iron plastic lining structure, their cast-iron housings can bear the pressure from the system and the pipe, so that the defect of low strength of full plastic structure will never exist. Plastic lining without filler owns strong chemical corrosion resistance performance.

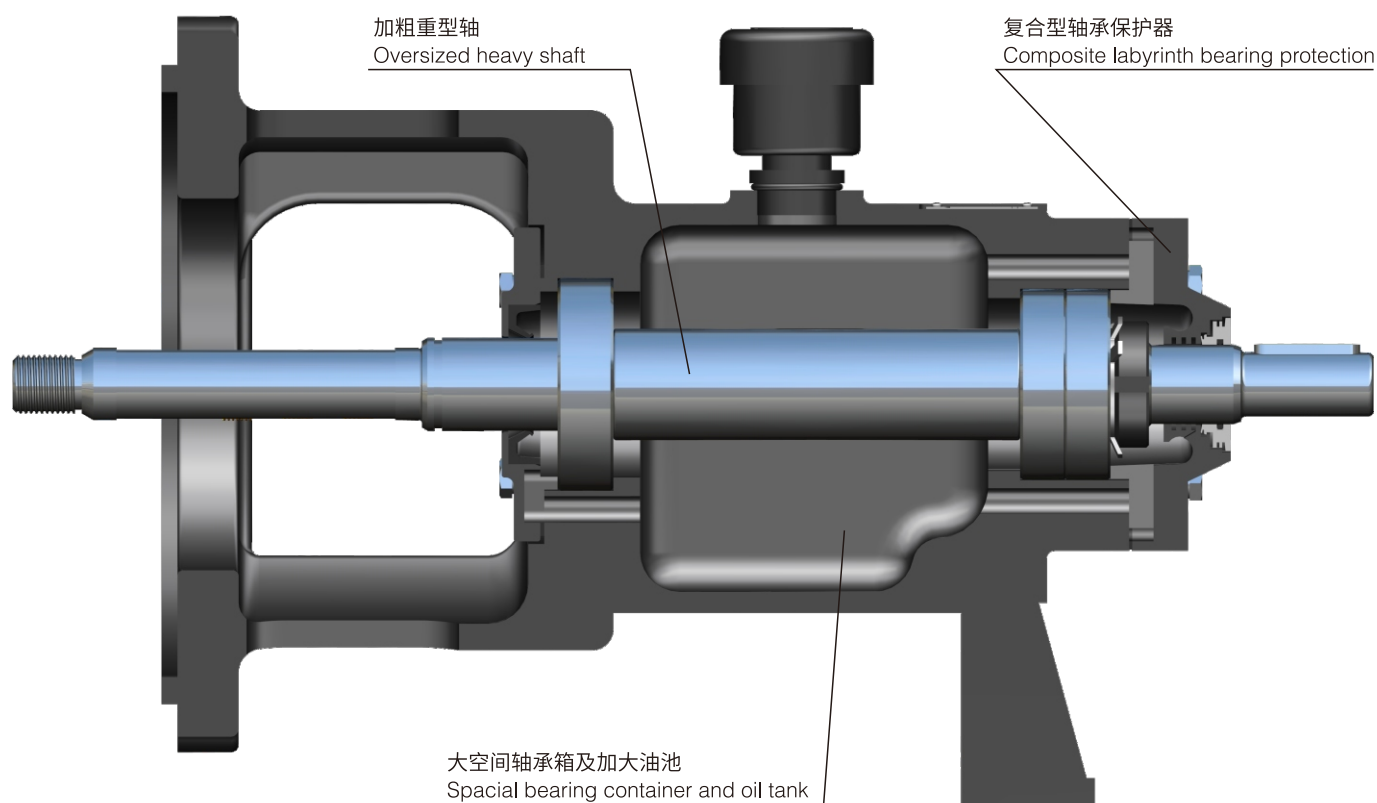
High strength steel part structure embedded in impeller will greatly reduce the deformation caused by alternate load of impeller during its operation, so that the operation of pump will be more stable and more reliable.

Thickened plastic lining will extend the service life under different climates, use conditions and working conditions.

Our company's patented anti-reversal shaft transmission structure will improve the use reliability of pump and eliminate the risk of impeller loosening.

Our company's patented product Type 170 mechanical seal and Type WB2 mechanical seal will be used as the shaft seal of IFK plastic centrifugal pump. These types of shaft seal will have a wider range of application and longer service life after several times of optimization and many years' customer experience.

Optimized design, safe operation easy maintenance, long running life



加粗重型轴，加长轴承间距，保证轴即使泵工作在远离设计点情况下产生挠度极小，运行稳定性好，降低维修费用及运行成本。

轴承采用油浴润滑，大空间轴承箱及油池，提高泵整体刚性，无需外加油杯，降低润滑油温升，延长轴承寿命。

复合迷宫轴承隔离器，彻底解决轴承箱漏油问题，防止进入灰尘及水，提高轴承使用寿命，运行更可靠。

Oversized heavy shaft and extended bearing spacing will ensure extreme small deflection and good operation stability even when the pump is working far beyond the design condition, therefore reduces maintenance cost and operation cost.

The bearing will adopt bath lubrication. Spacial bearing container and oil tank will improve the rigidity of the whole pump rather than adding oil cup, reduce the temperature rise of lubricant and extend the service life of bearing

Composite labyrinth bearing protection will thoroughly solve the oil leakage problem of bearing box, prevent water and dust from entering, improve the service life of bearing and make operation more reliable.

Optimized design, safe operation easy maintenance, long running life

直锥形吸入室，速度场均匀，结构紧凑，水力损失小。

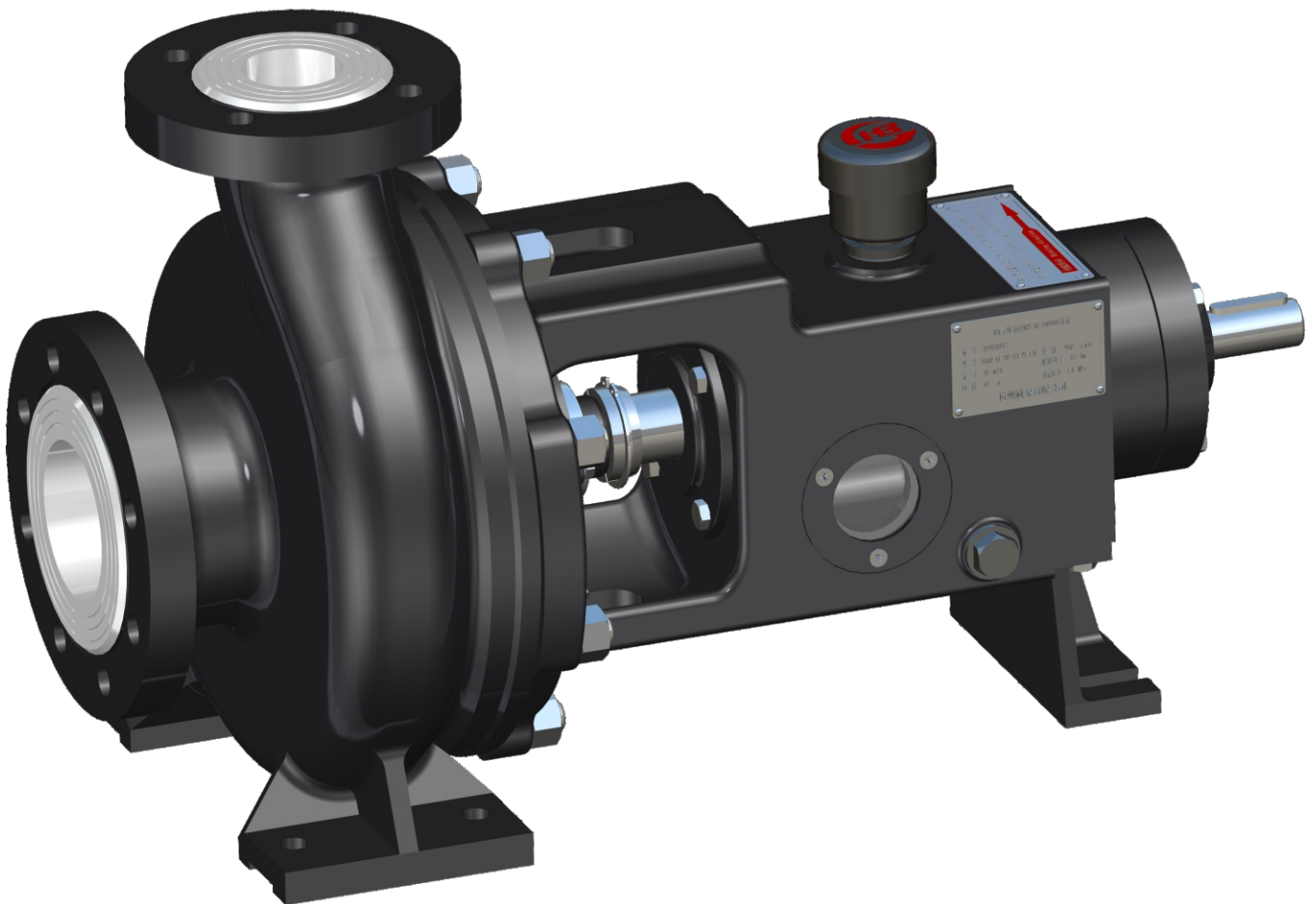
半开式叶轮，通流能力强。巧妙的背叶片设计，平衡轴向力，同时将介质固相旋离机封腔。

大尺寸泵采用B型角接触球轴承，以承受因工作点偏离设计点或用户苛刻工况（如高的进口压力等）所产生的轴向力，保证轴承使用寿命。

Straight cone type suction chamber is even in velocity field, compact in structure and small in head loss.

Semi-open impeller, so that the pump is strong in flow capacity. Ingenious back vane design will balance the axial force and meanwhile seal the cavity of medium solid phase spinning machine.

Large size pump will use Type B angular contact ball bearings to bear the axial force caused when working point deviates from design point or under harsh user condition (e.g. high inlet pressure etc), so as to ensure the service life of bearing.



合同试验， 保证泵性能的满足

本公司依据合同和标准执行以下测试：

静水压试验

试验基于常温清水，压力为基本设计压力的1.5倍，保压10分钟。

性能试验

依据ISO9906标准测量，试验精度II类，验收类2B。

NPSH试验

依据ISO5199标准测量。

振动试验

依据ISO5199进行振动试验，泵的振动烈度级别控制在A级。

温度测量

在工作温度下，对轴承温升进行测量，测量的结果记录在案。

材料检验

零部件材质检验，衬塑层电火花测试，保证整机可靠性。

Test to be carried out according to the contract to ensure the performance of the pump satisfies the contractual requirement.

Our company will carry out following test in accordance with the contract and standard:

Hydrostatic pre

The test will be carried out based on clean water under normal temperature. The pressure will be 1.5 times of design pressure and the pressure will be held for 10 min. ssure test

Performance test

Measure in accordance with ISO 9906. The test accuracy will be category II and acceptance category will be 2B.

NPSH test

Measure in accordance with ISO5199.

Vibration test

Carry out vibration test in accordance with ISO5199 and the vibration severity of pump will be controlled at level A.

Temperature measurement

Measure the temperature rise of bearing under working temperature and the result will be recorded.

Material inspection

Spare parts shall go through material quality inspection and cast shall go through NDE to guarantee the reliability of the integral machine.



订货须知

Notice to Order

(一) 配用电机的额定输出功率与泵的额定轴功率之比应按照下列的百分数：

轴功率	百分比%
22kW以下	125%
(22~75)kW	115%
75kW以上	115%

The ratio of the motor's rated power to the pump's shaft power should be the following:

The shaft power of the pump	the ratio (%)
Below 22kW	125%
(22-75)kW	115%
Above 75kW	115%

(二) 订货时按《泵工作条件》详细填写。

When ordering, please fill in the table "Working conditions of the pump".

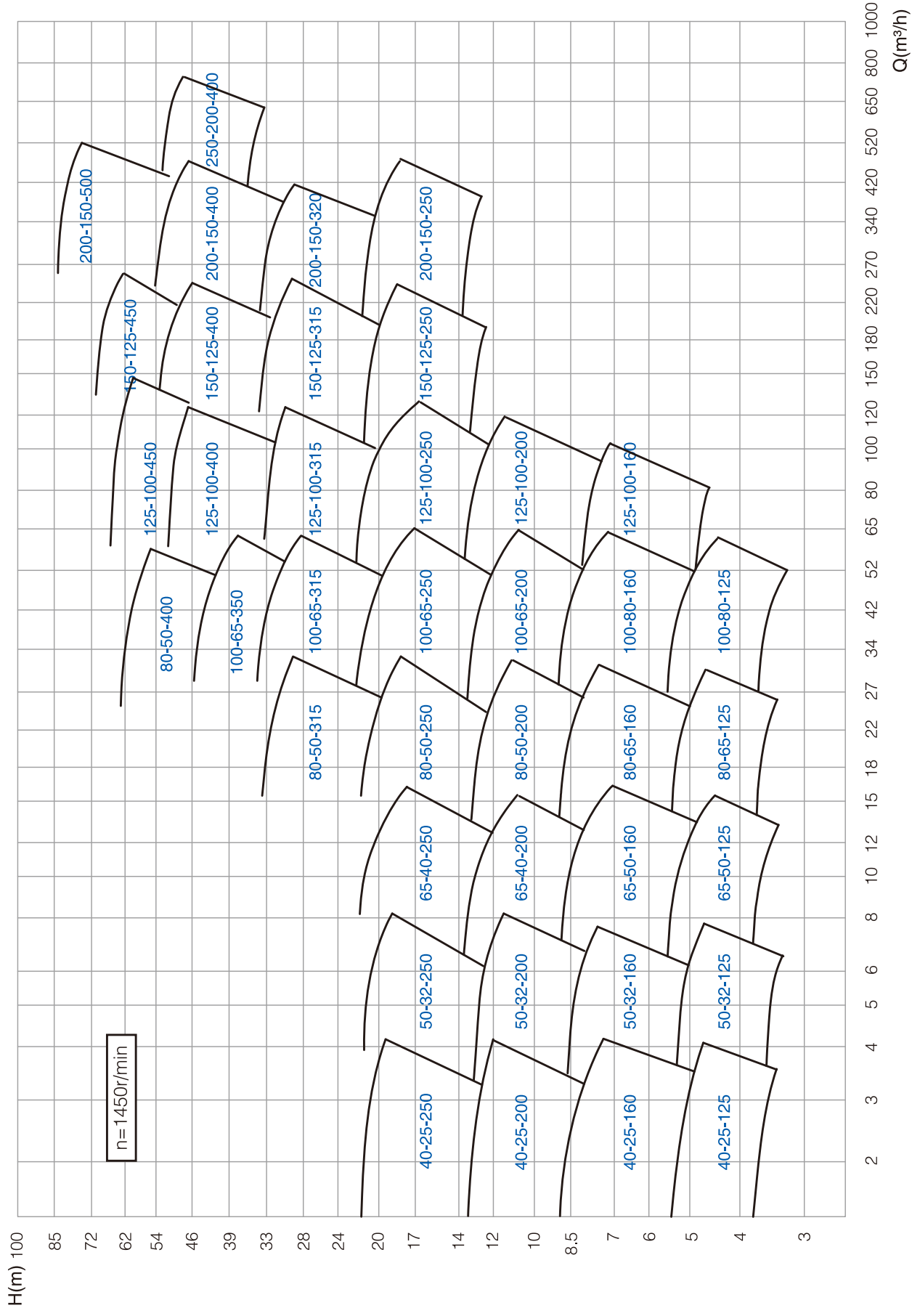
(三) 保修条款只有在使用本公司原厂备件时才有法律效力。

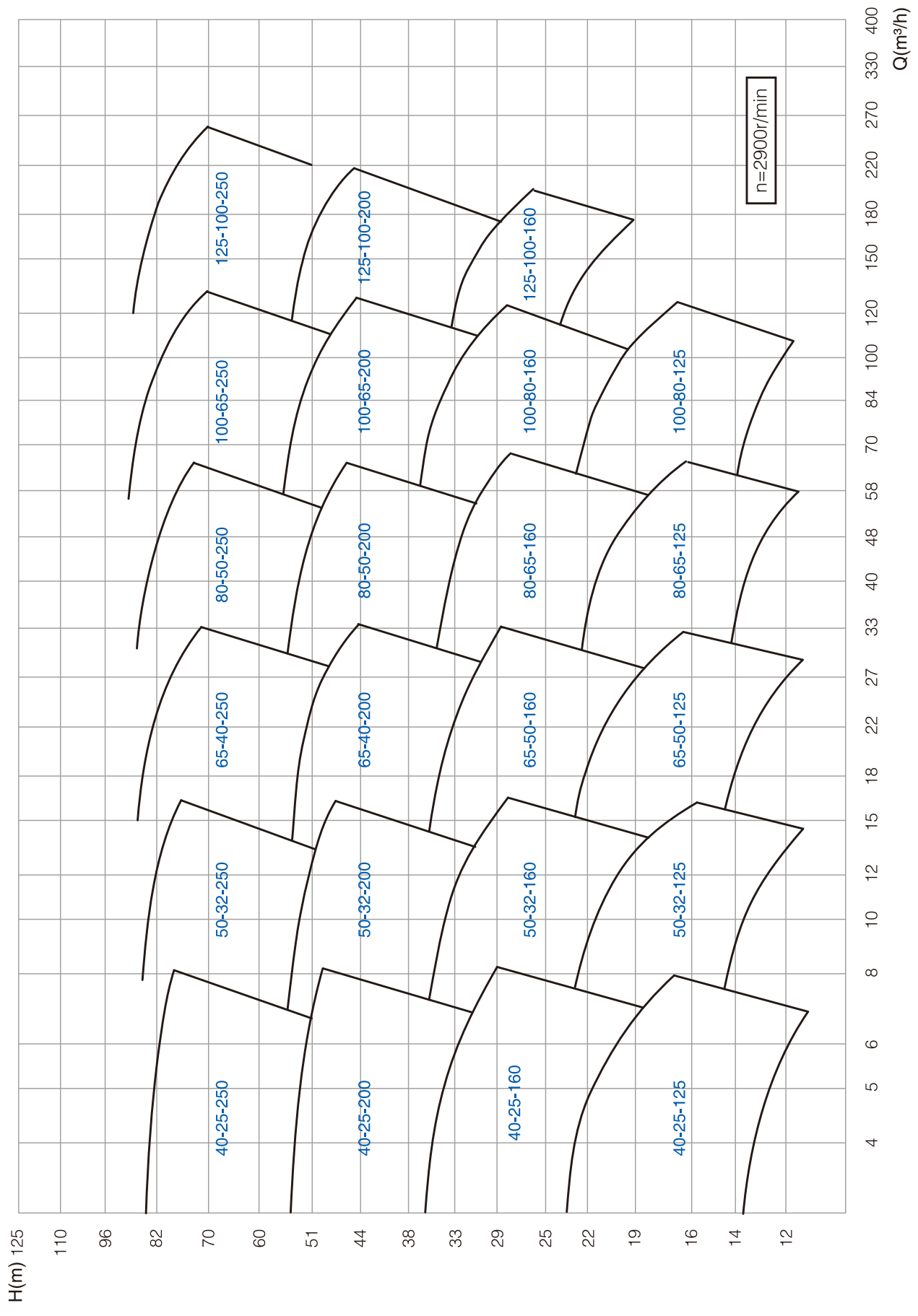
Warranty is valid only when genuine spare parts of our company are used.

泵工作条件 Working Conditions of the Pump

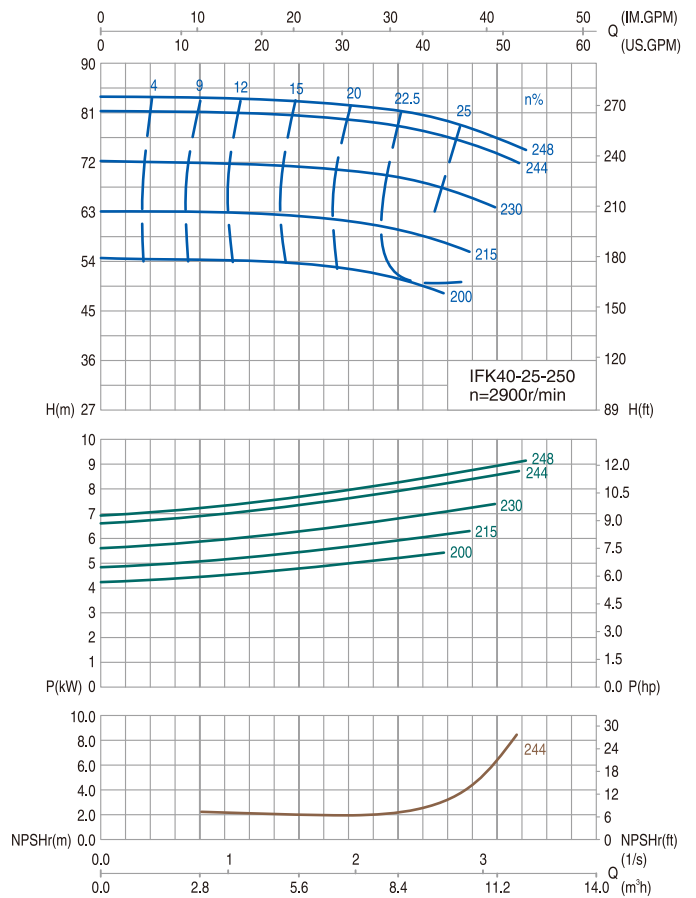
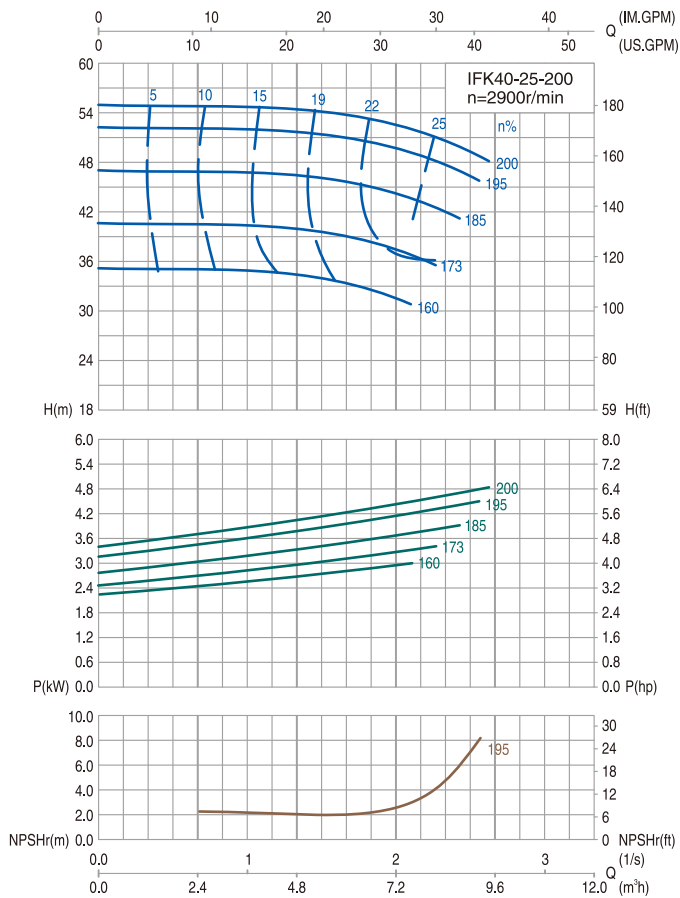
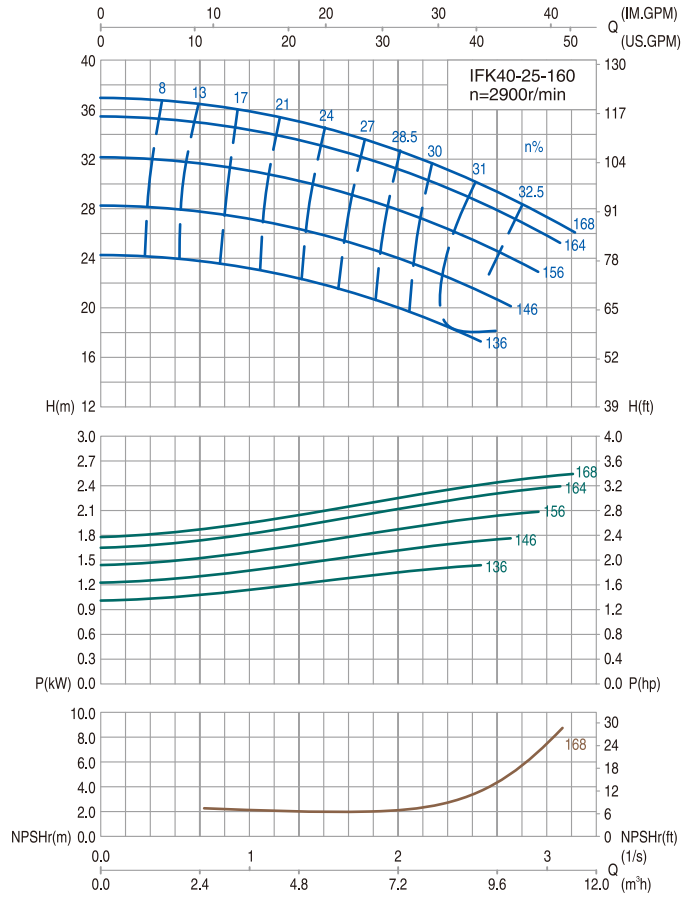
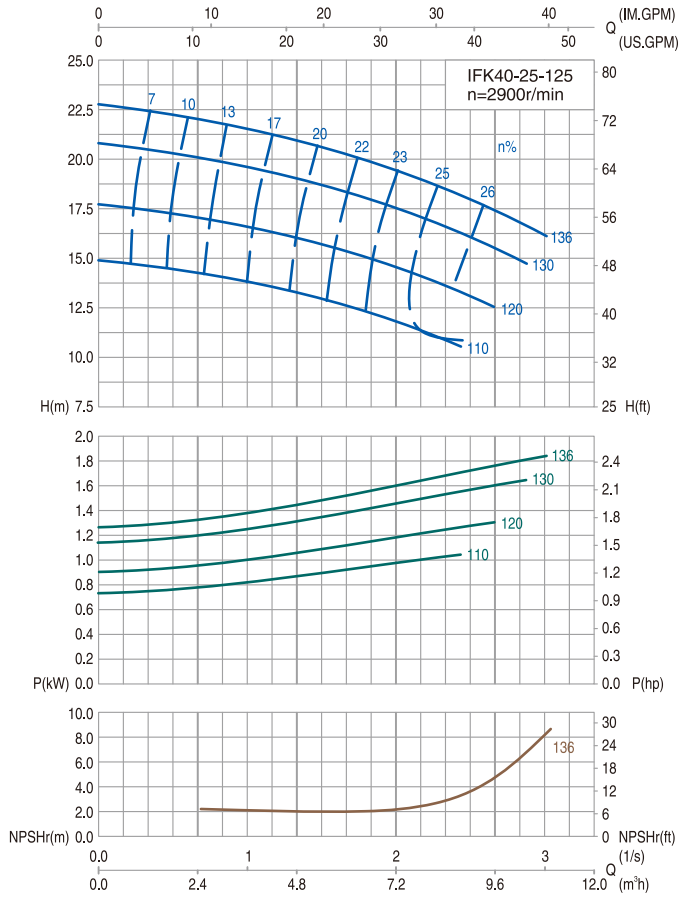
工作条件 Operating conditions				输送介质 Pumped fluid					
流量 Capacity	m ³ /h	最大 Max	额定 Rated	最小 Min	介质 1 Media	最大比例 Max ratio	最小比例 Min ratio	%	
扬程 Total head	m	最大 Max	额定 Rated	最小 Min	介质 2 Media	最大比例 Max ratio	最小比例 Min ratio	%	
进口压力 Suction pressure	MPa	最大 Max	额定 Rated	最小 Min	介质 3 Media	最大比例 Max ratio	最小比例 Min ratio	%	
出口压力 Discharge pressure	MPa	最大 Max	额定 Rated	最小 Min	固体 Solid	含量 (湿基) Content (humidity) Wt %			
必需汽蚀余量 NPSH required	m					粒度直径 Particle diameter mm			
操作条件 Operating conditions	连续 Continuous		间断 Intermittent		介质特性 Medium characteristics	腐蚀 Corrosion	磨(冲)蚀 Abrasion		
现场资料和公用事业条件 Spot conditions					泵送温度 Operation temp	°C	最大 Max	正常 Normal	最小 Min
位置 Position					密度 Density	在操作温度下 Under operating temp kg/m ³			
室内 Indoor	有采暖 With heating		有遮棚 With shield		粘度 Viscosity	在操作温度下 Under operating temp mPa.s			
室外 Outdoor	无采暖 Without heating		无遮棚 Without shield		汽化压力 Vapor pressure	在操作温度下 Under operating temp MPa(A)			
必须的防寒气候条件 Requirement of Cold-proof					比热 Specific heat	kcal/kg°C			
必须的耐湿热气候条件 Requirement of Damp-heat-proof					氯化物浓度 Concentration of chloride	PPM			
现场资料 Site condition					H2S(硫化氢)浓度 Concentration of H2S	PPM			
海拔高度 Altitude	m			危险程度 Hazardous liquid	易燃 Flammable	易爆 Explosive	有毒 Toxic		
大气压力 Atmosphere pressure	kPa			挥发特性 Volatile characteristics	易 Easy	不易 Not easy			
相对湿度 Relative humidity	最大 Max	最小 Min	%	沸点 Boiling point	°C				
环境温度范围 Ambient temp. Range	°C			结晶温度 Crystallization temp	°C				
异常条件 Abnormal conditions	粉尘 Dust	烟雾 Smoking		熔点 Smelting point	°C				
危险区域 Electrical classification	类 Class	级 Division	组 Group	闪点 Point of flammability	°C				
电源 Power source	伏特 Volt	赫兹 Hz	相 Phase	相溶的液体 Compatible liquid					
冷却水 Cooling water	温度 Temp	压力 °C Pressure	MPa	相溶的橡胶 Compatible rubber					
	氯化物浓度 Chloride concentration			PPM	临界温度 Critical temp	°C			
仪表压缩空气 Compressed air of instrument	最大/最小压力 Max / Min. Pressure			/MPa	临界压力 Critical pressure	MPa			
传动方式 Driving way					其它 Other				
联轴器 Coupling type									

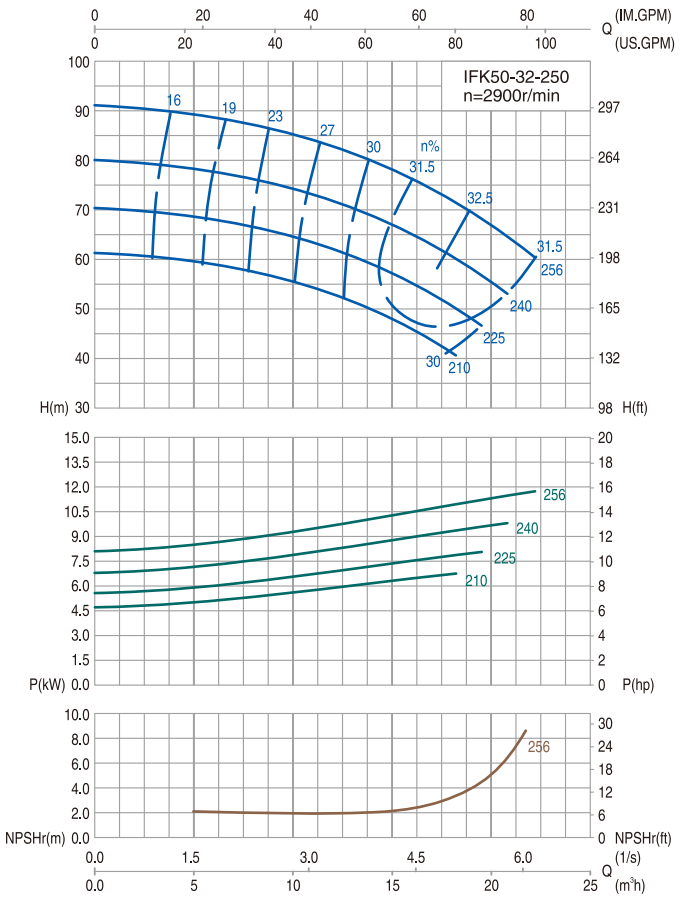
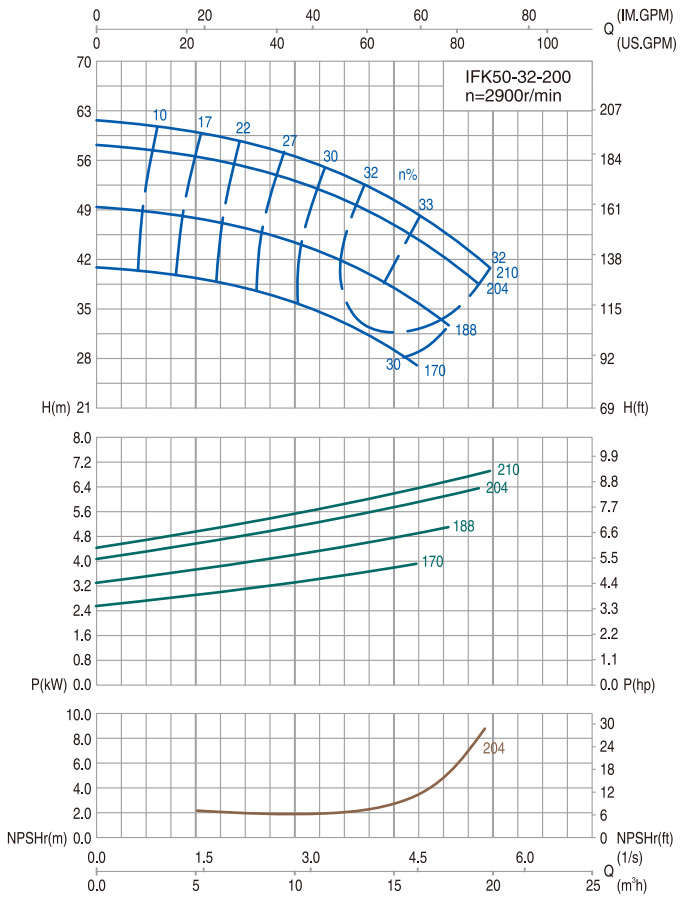
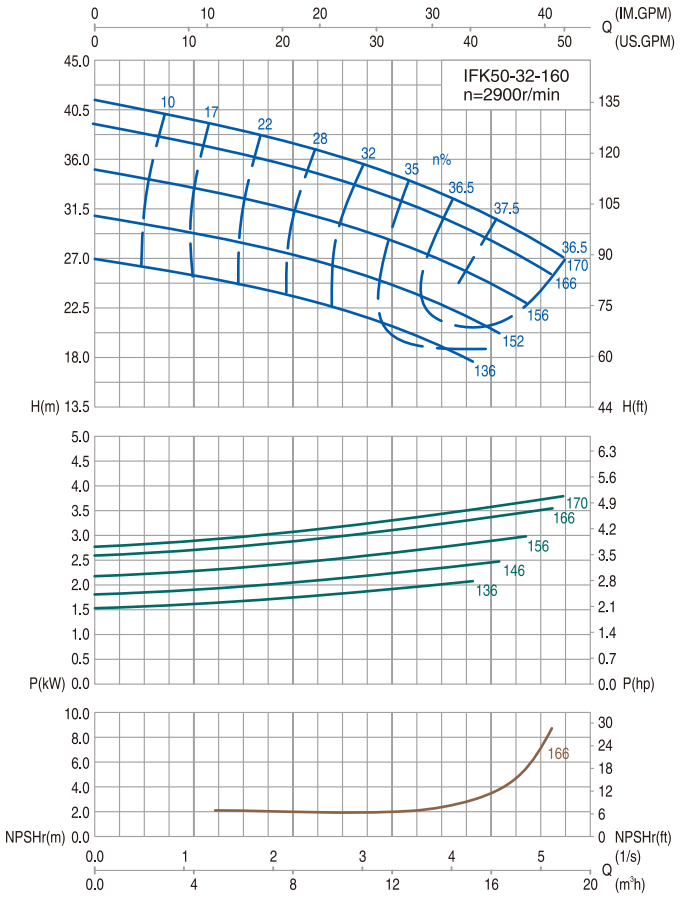
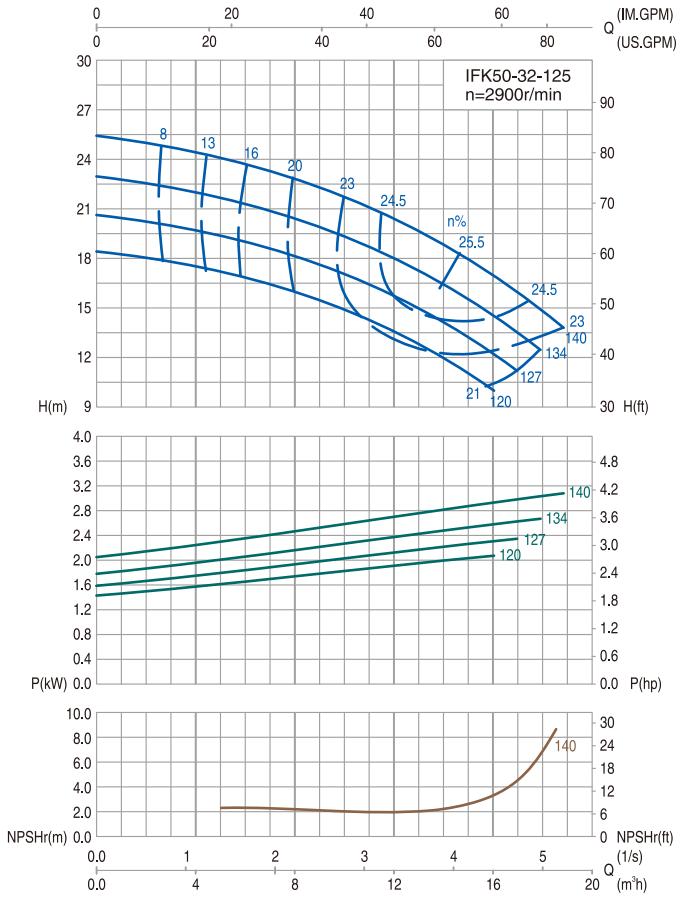
性能范围 Performance Range

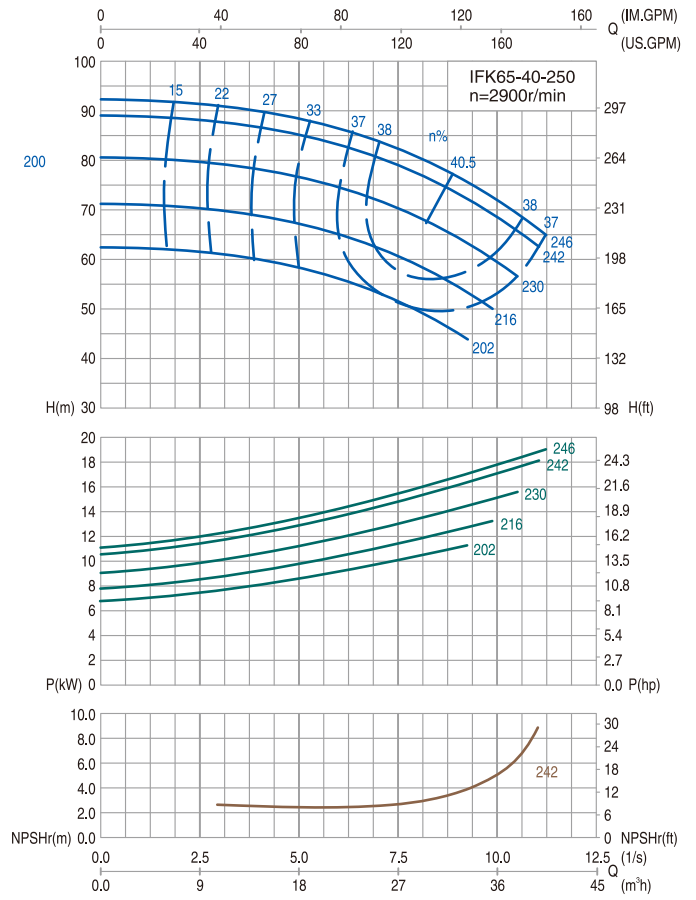
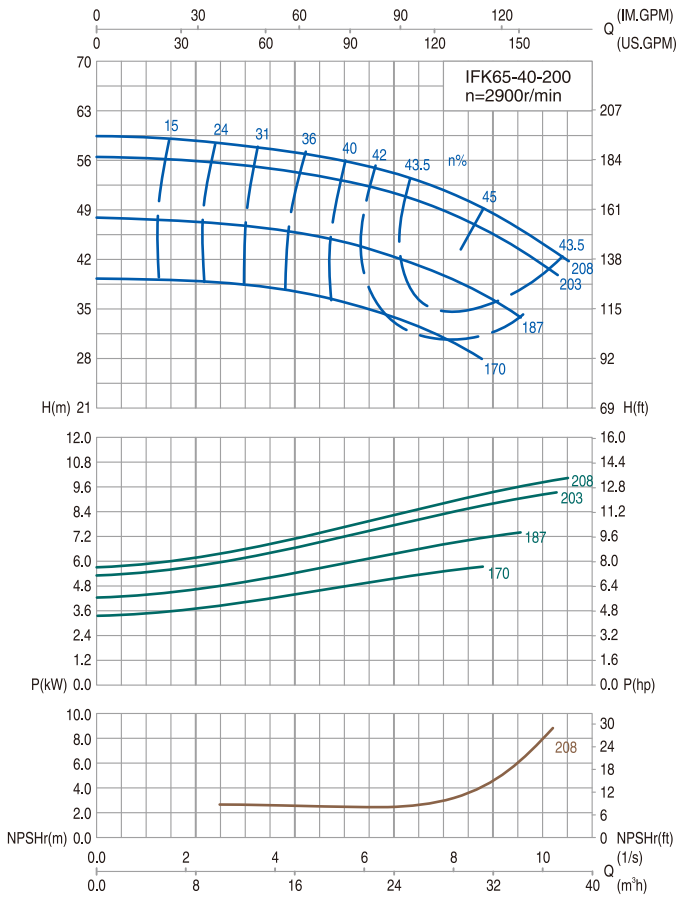
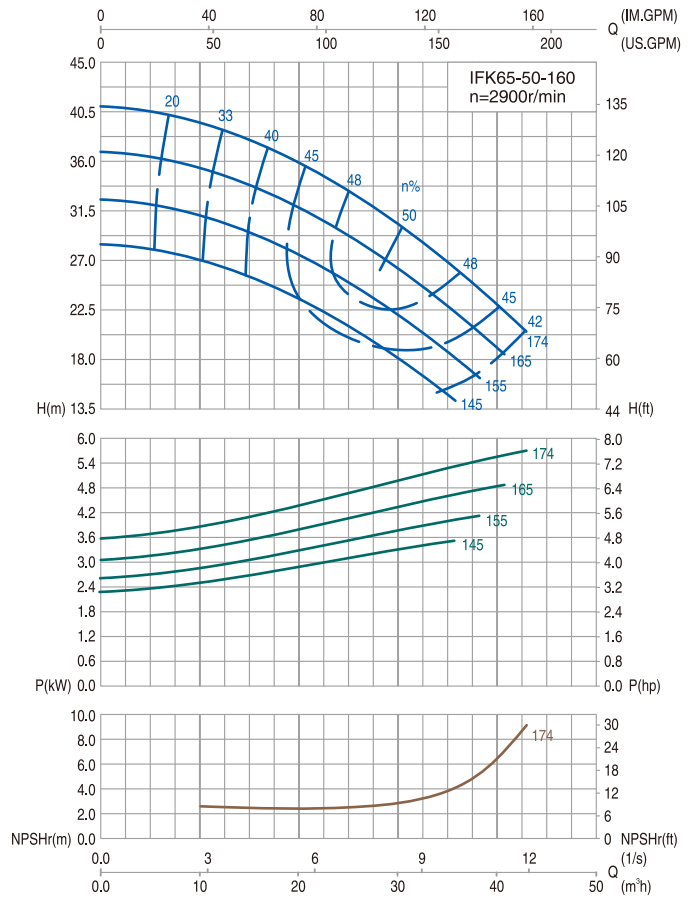
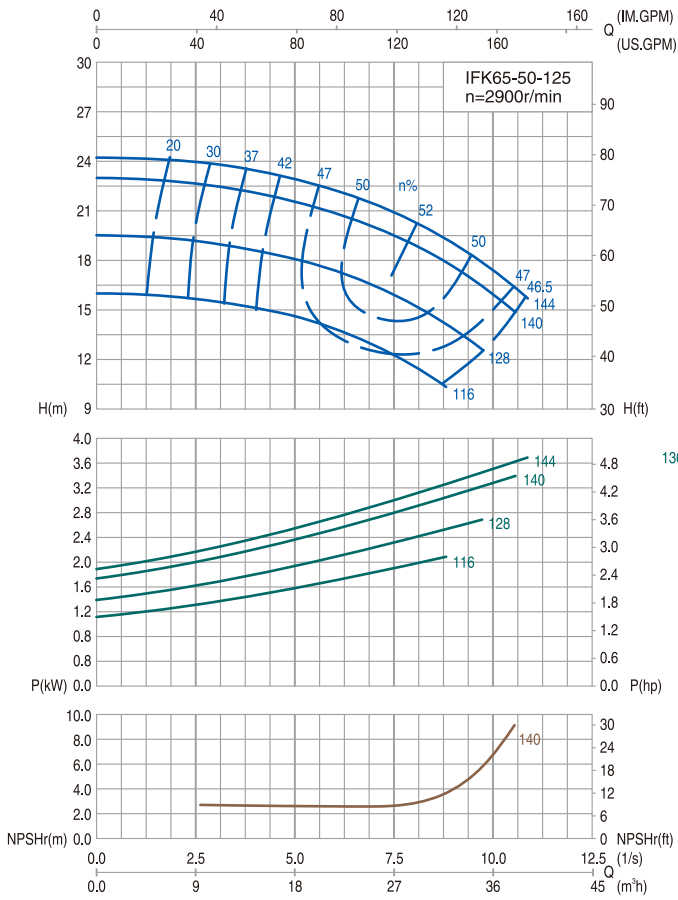


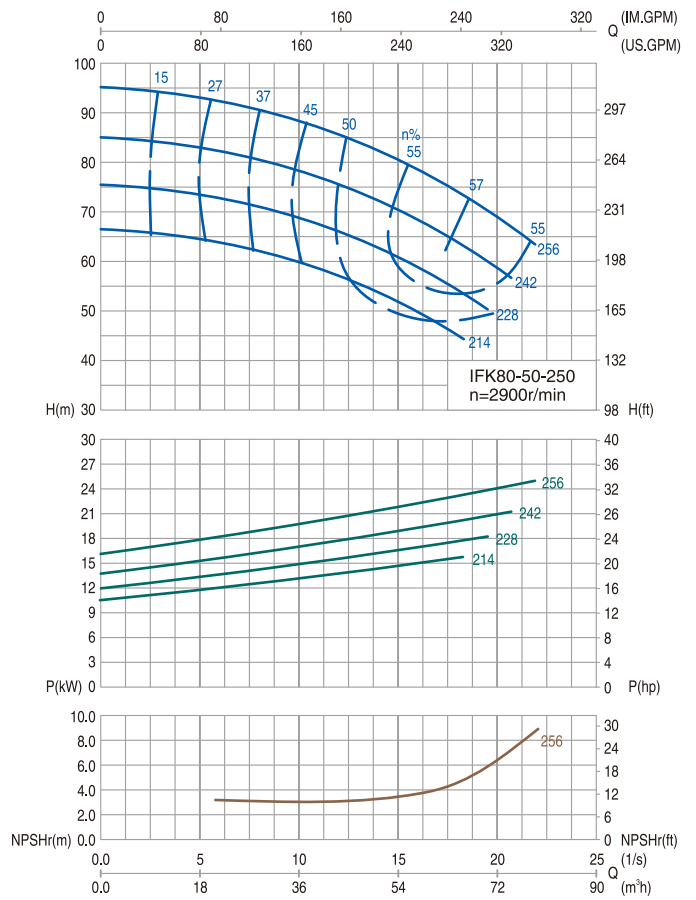
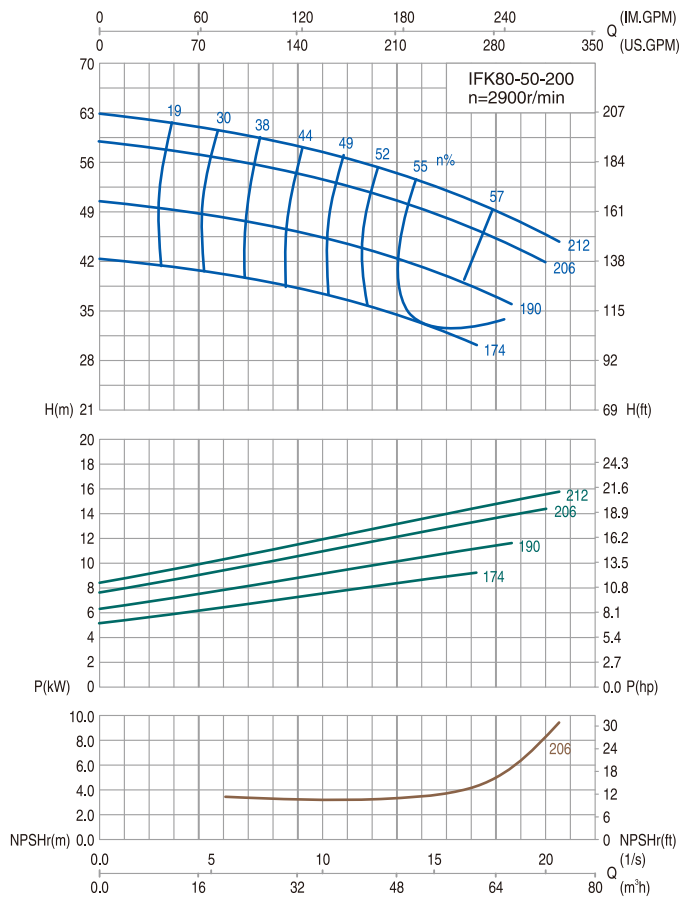
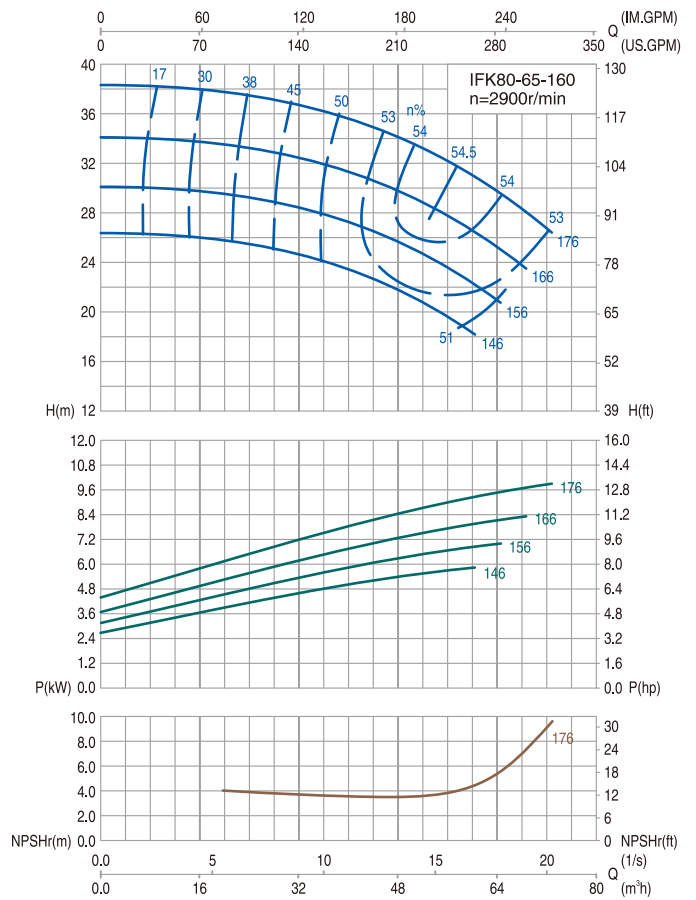
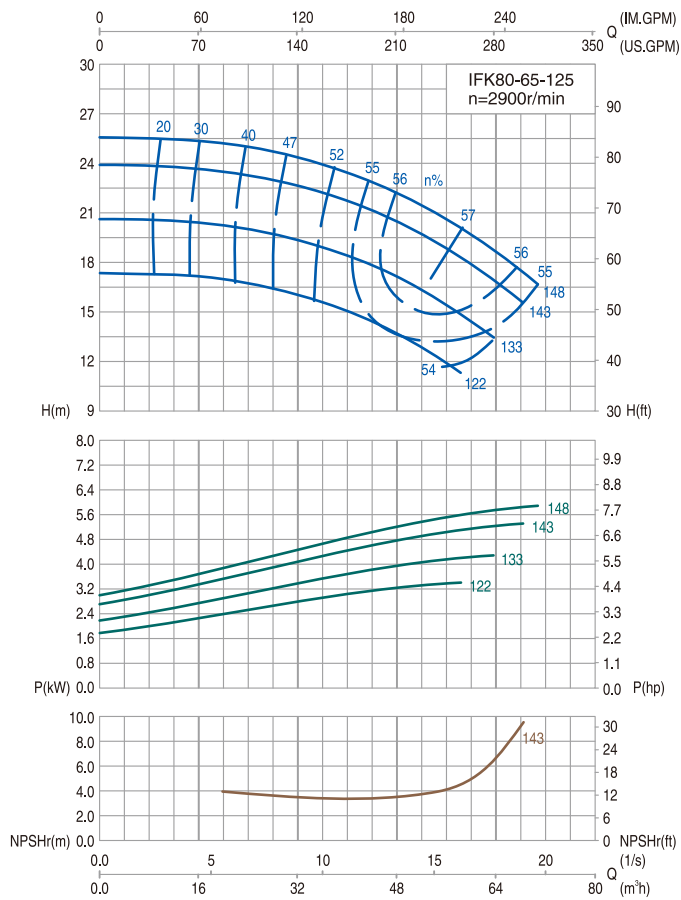


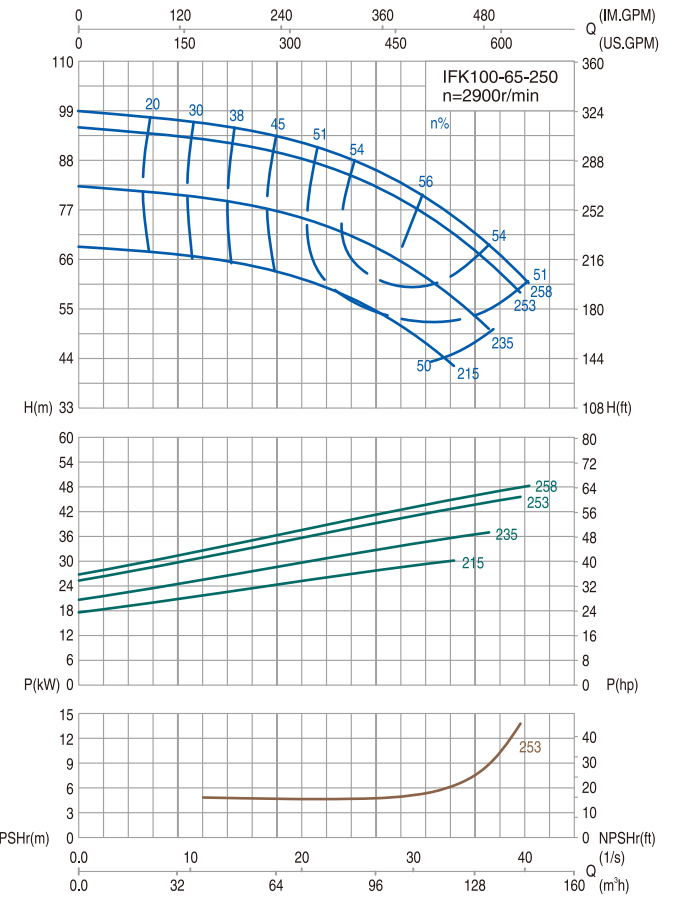
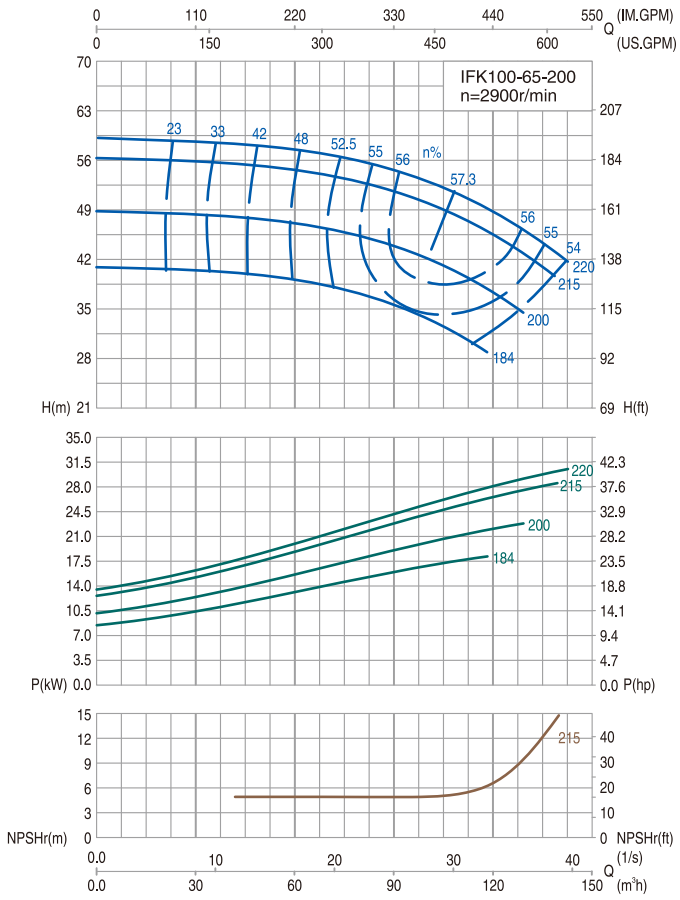
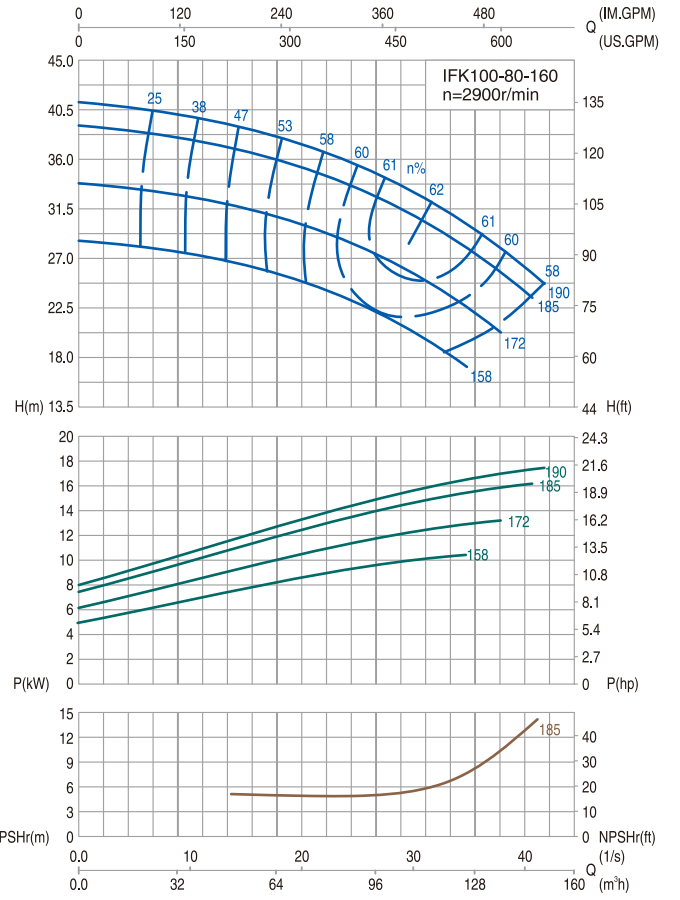
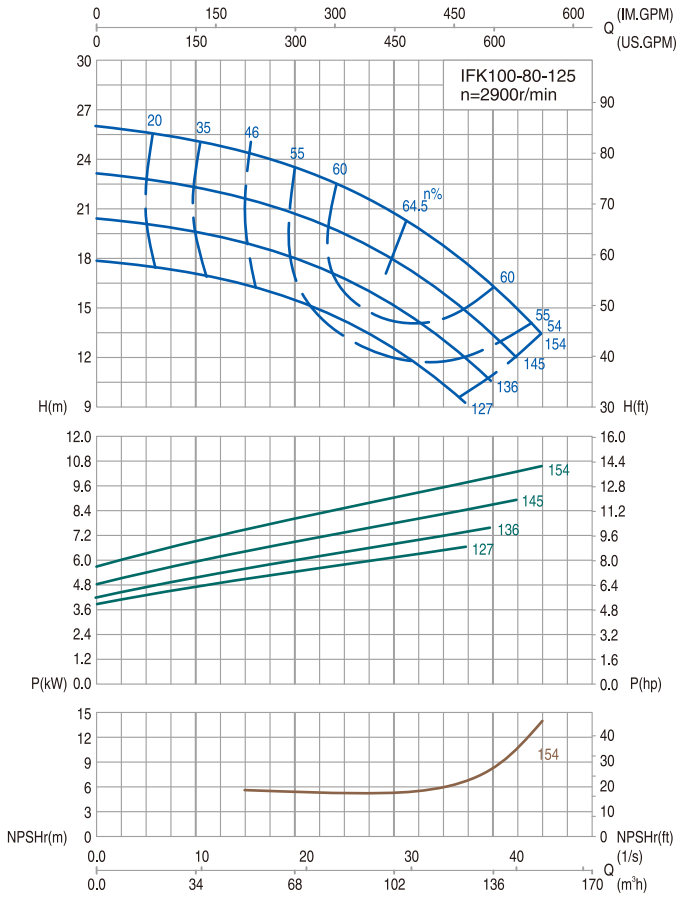
性能曲线 Performance Curve

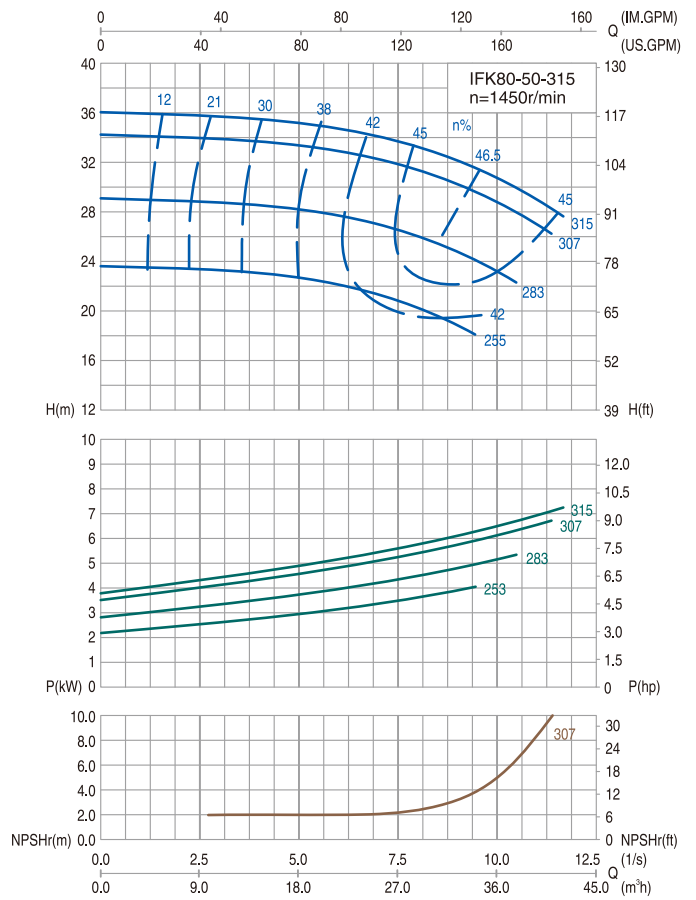
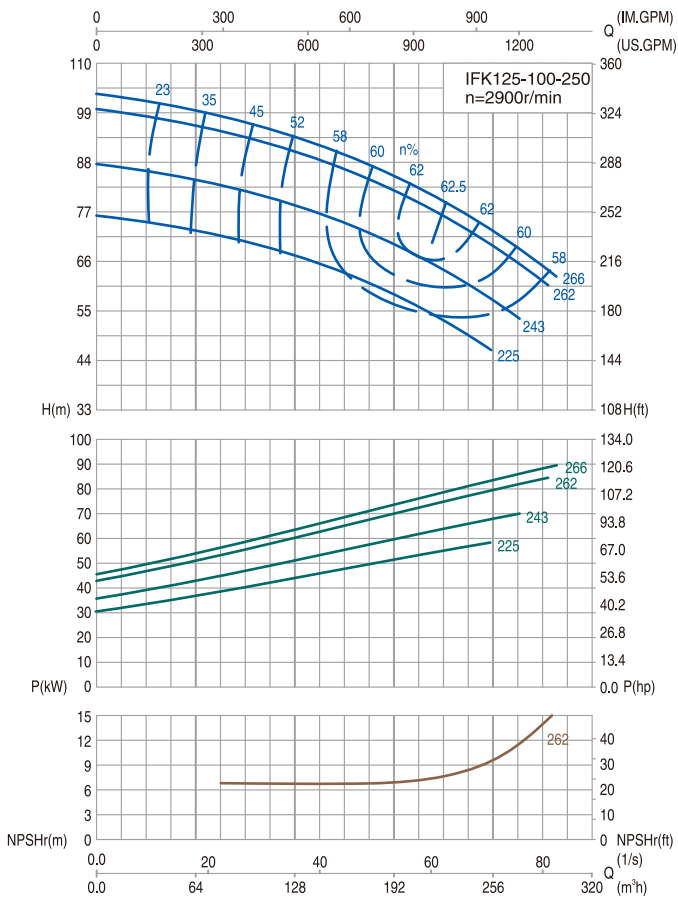
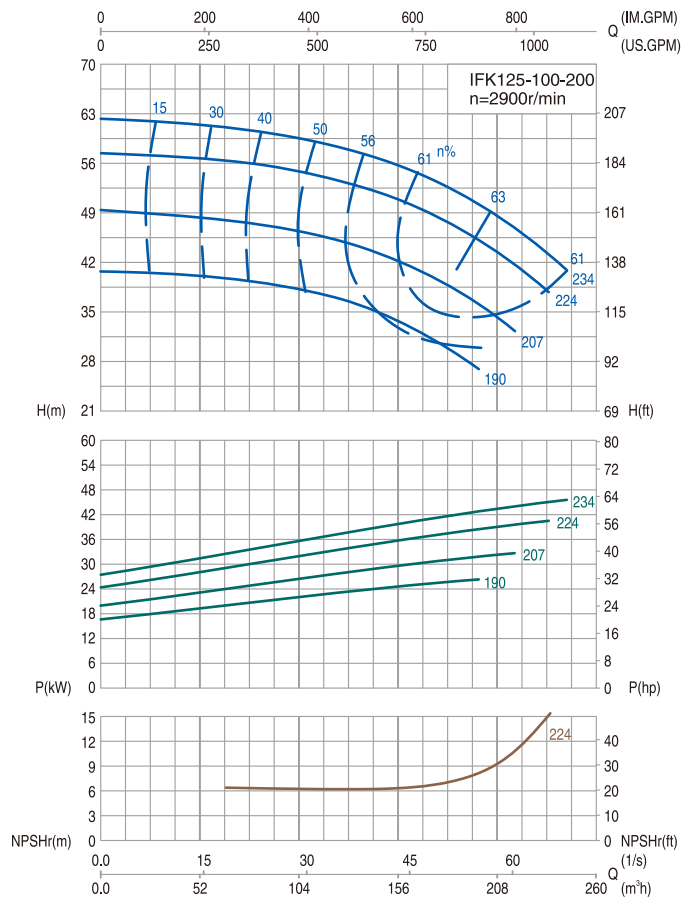
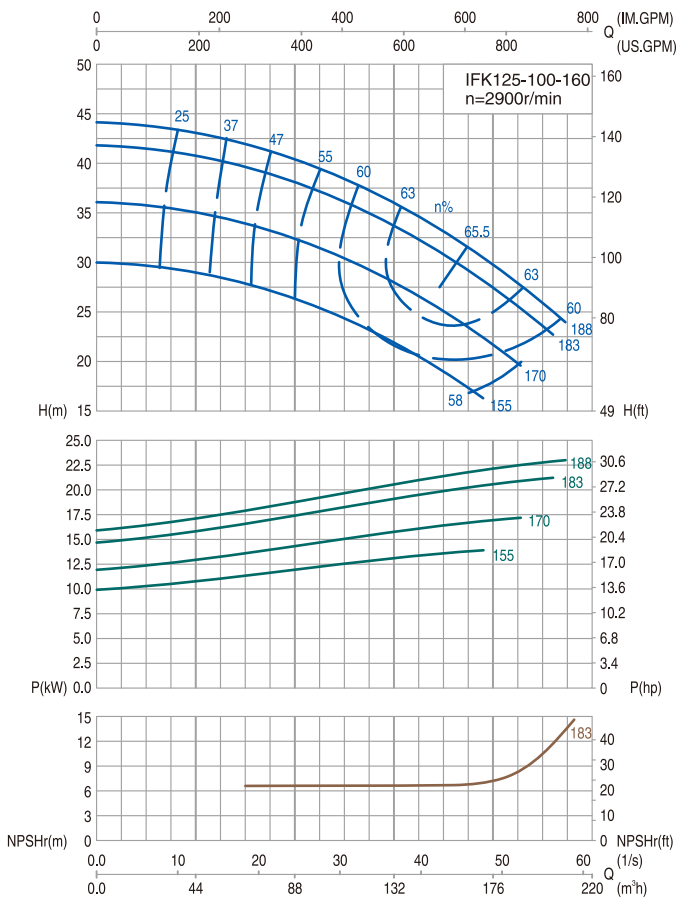


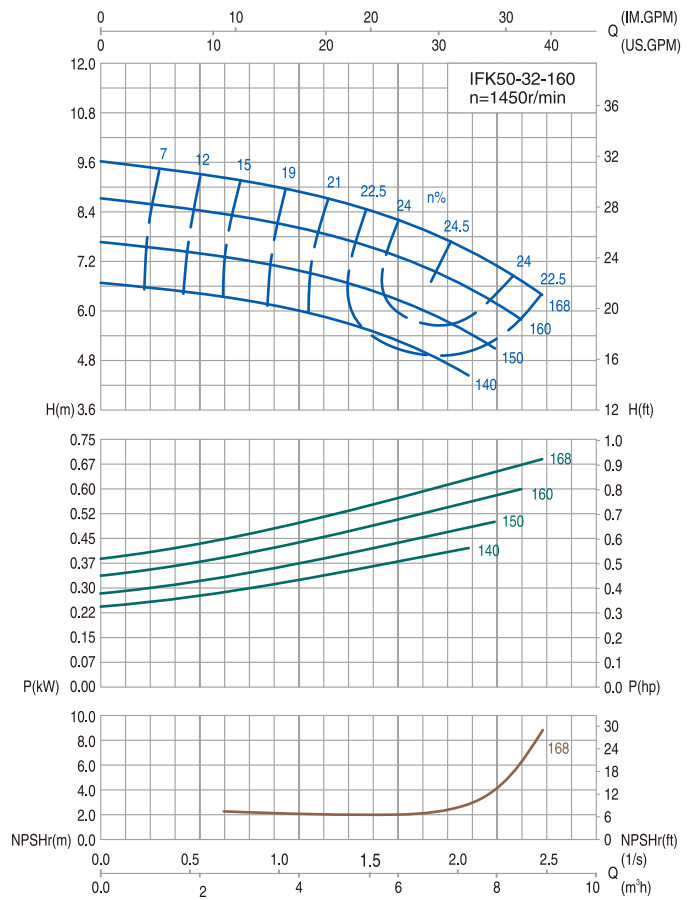
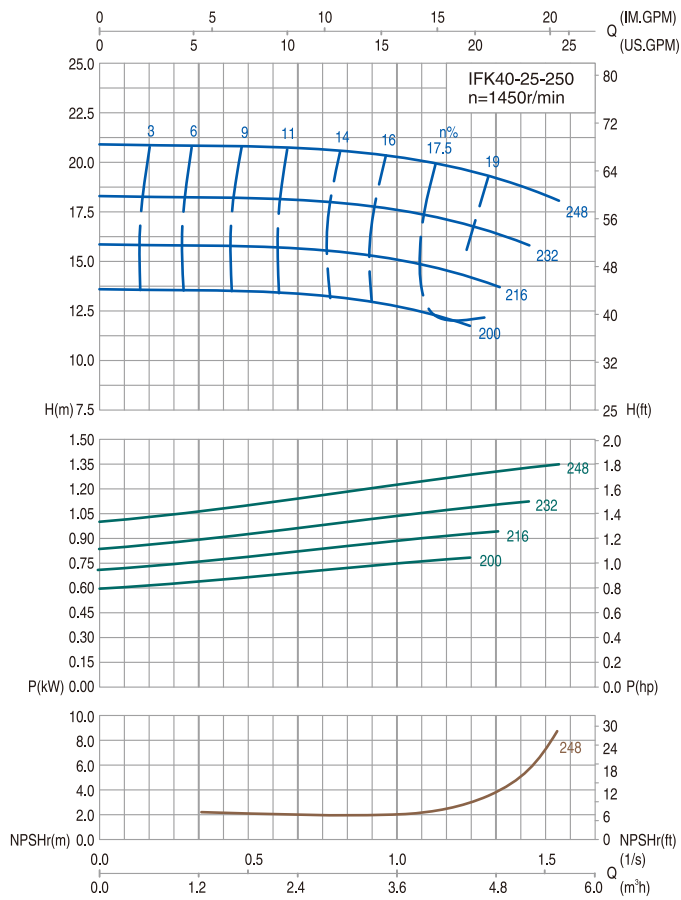
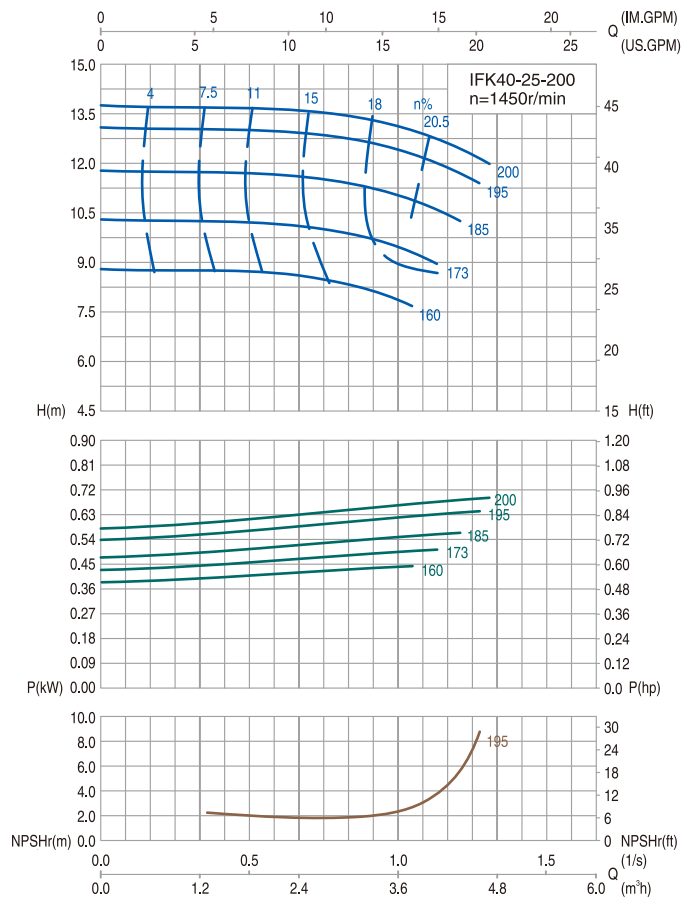
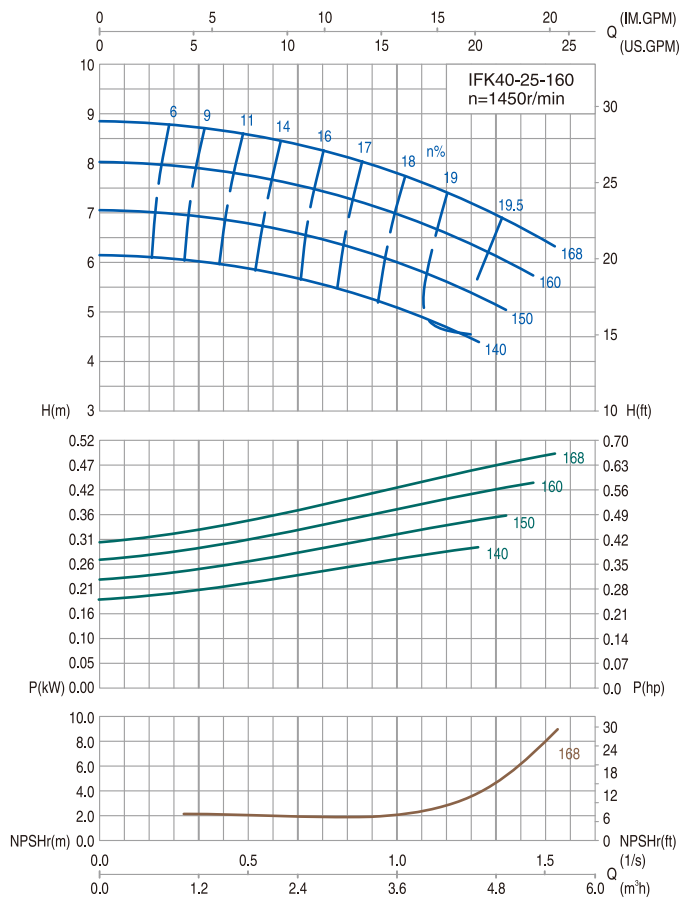


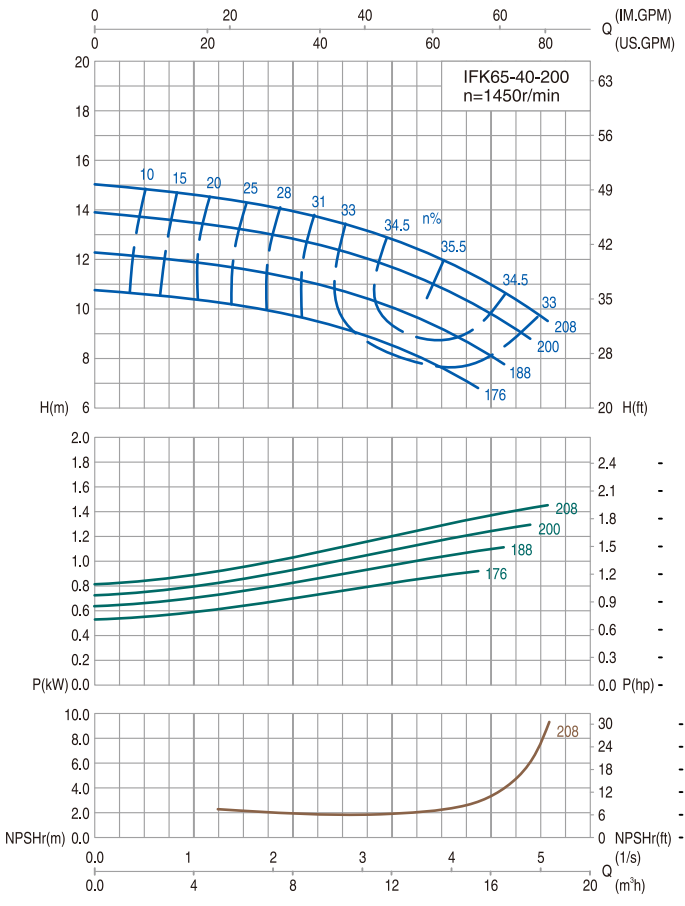
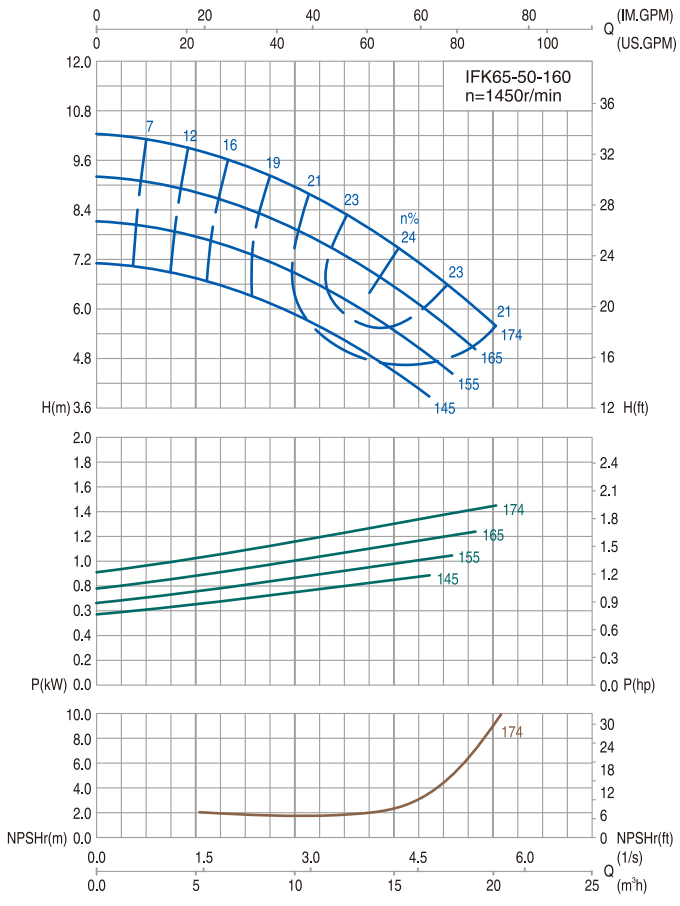
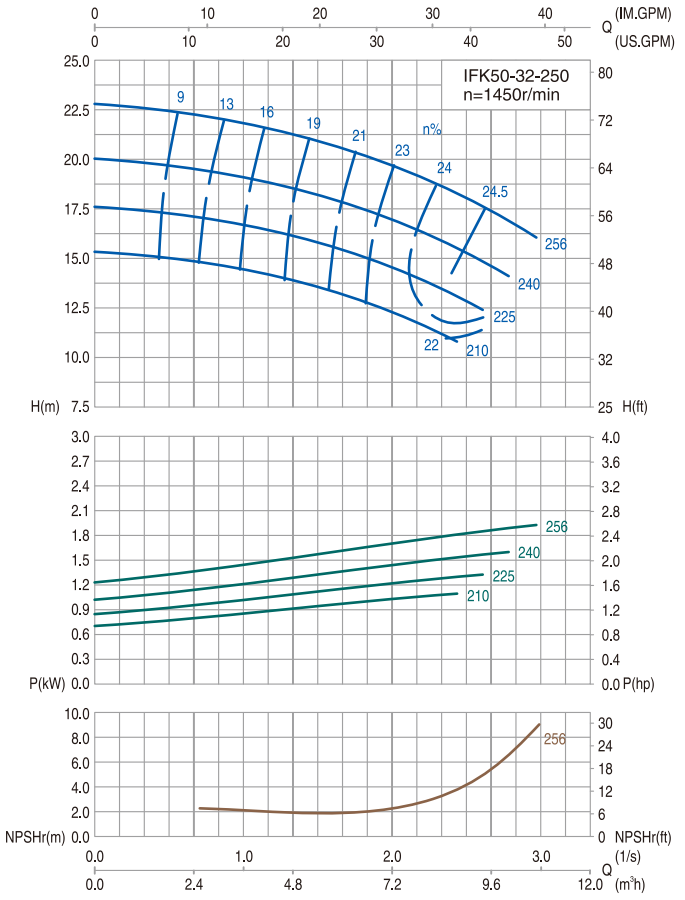
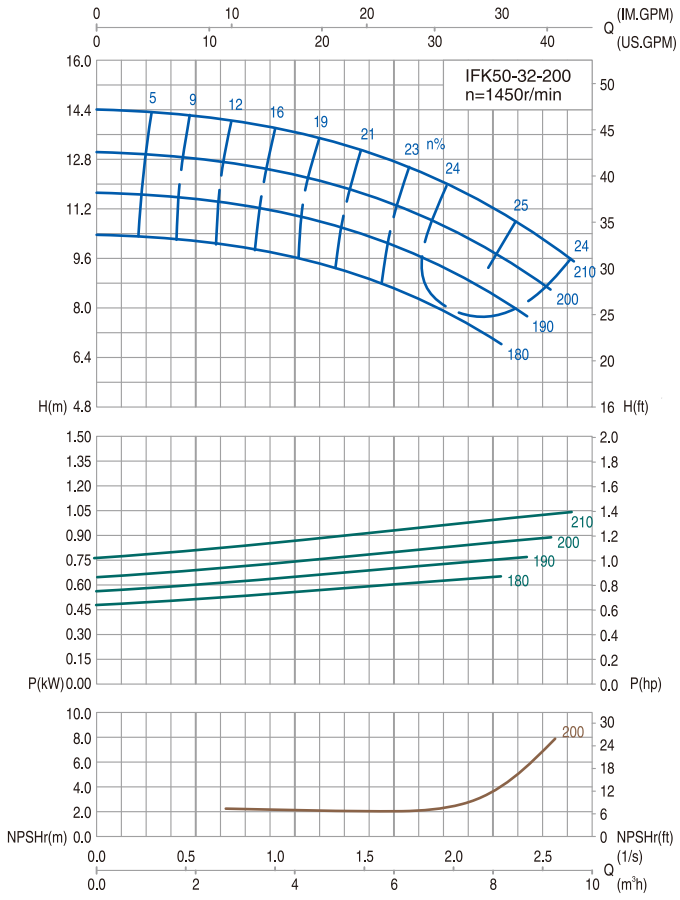


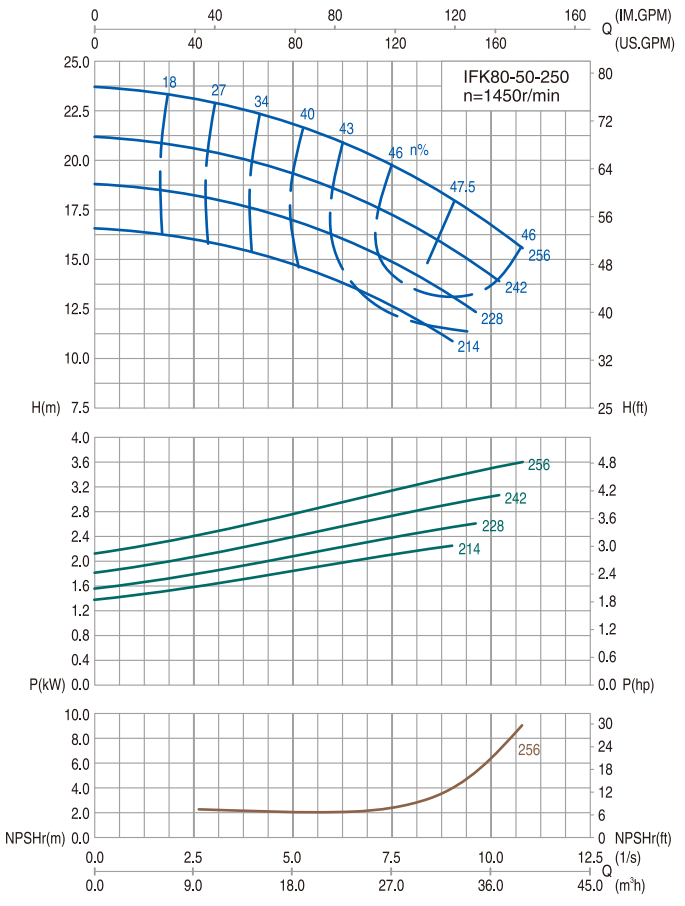
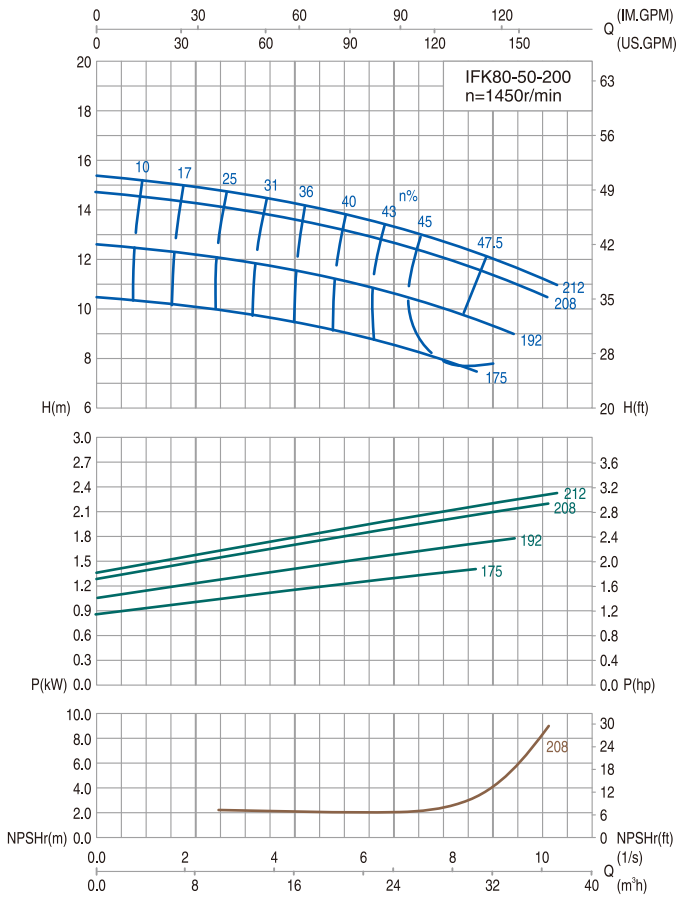
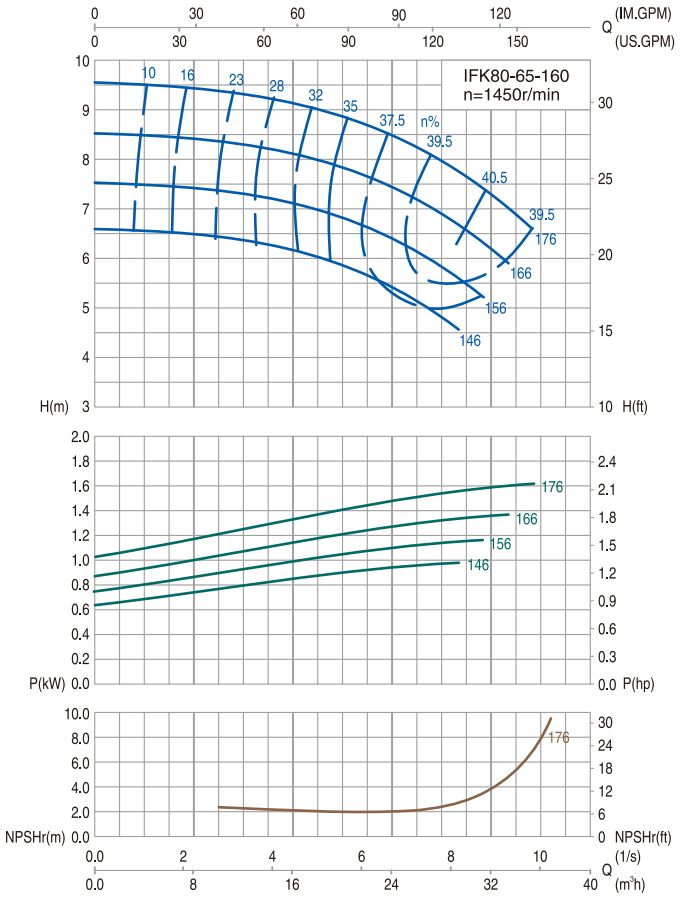
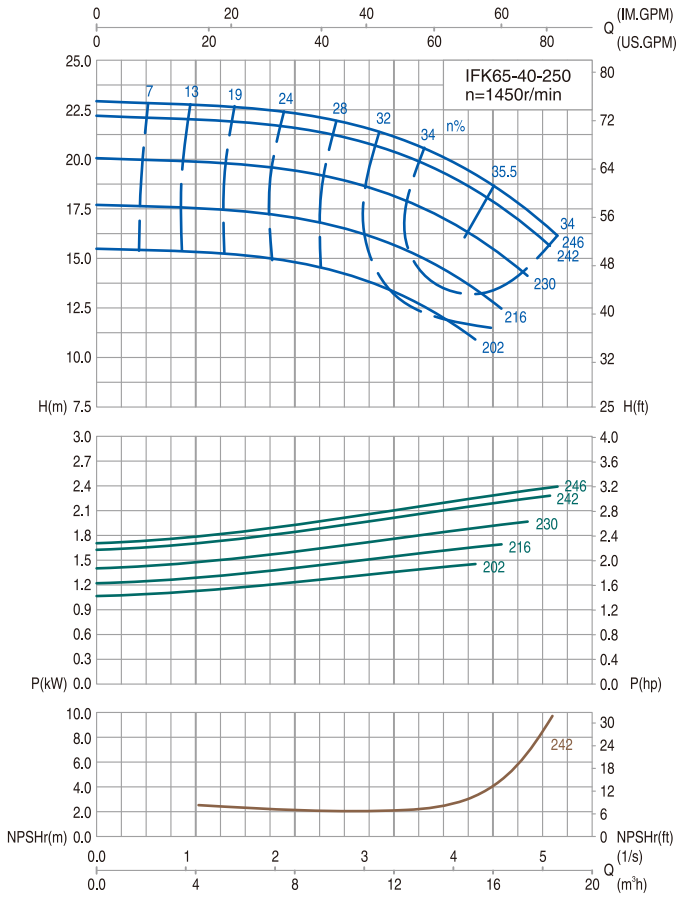


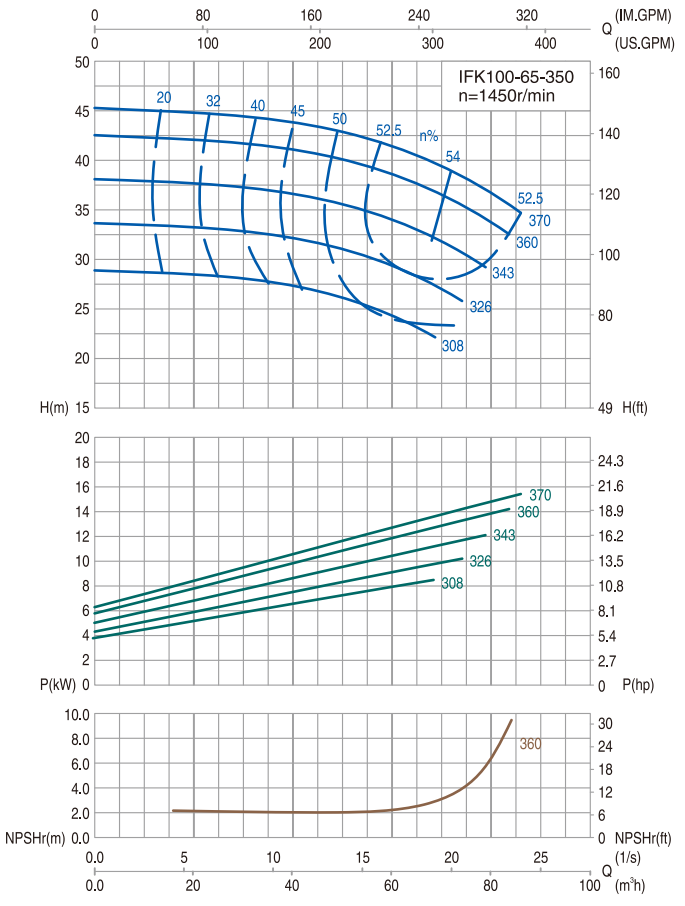
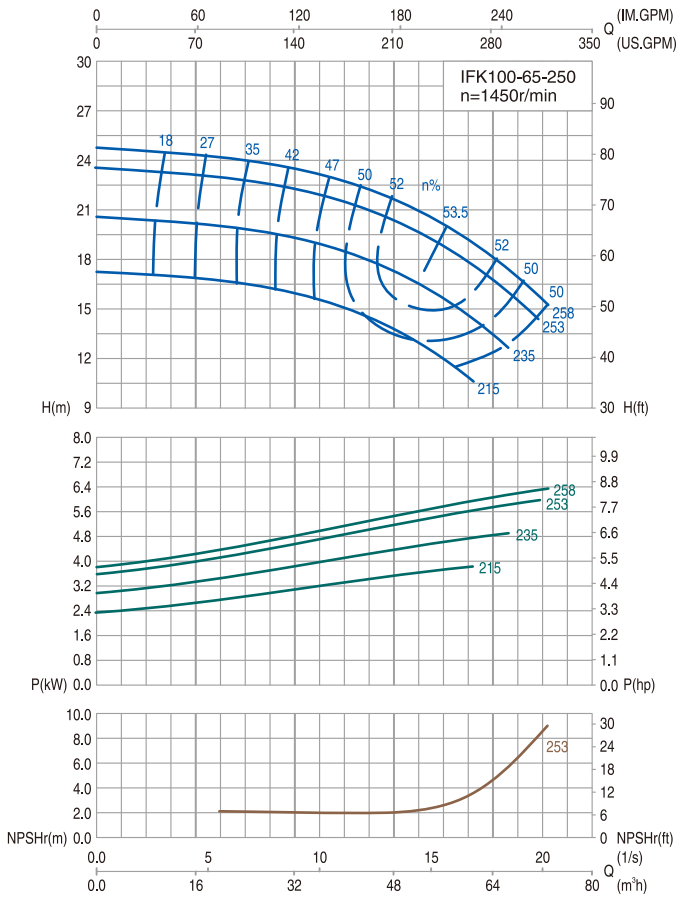
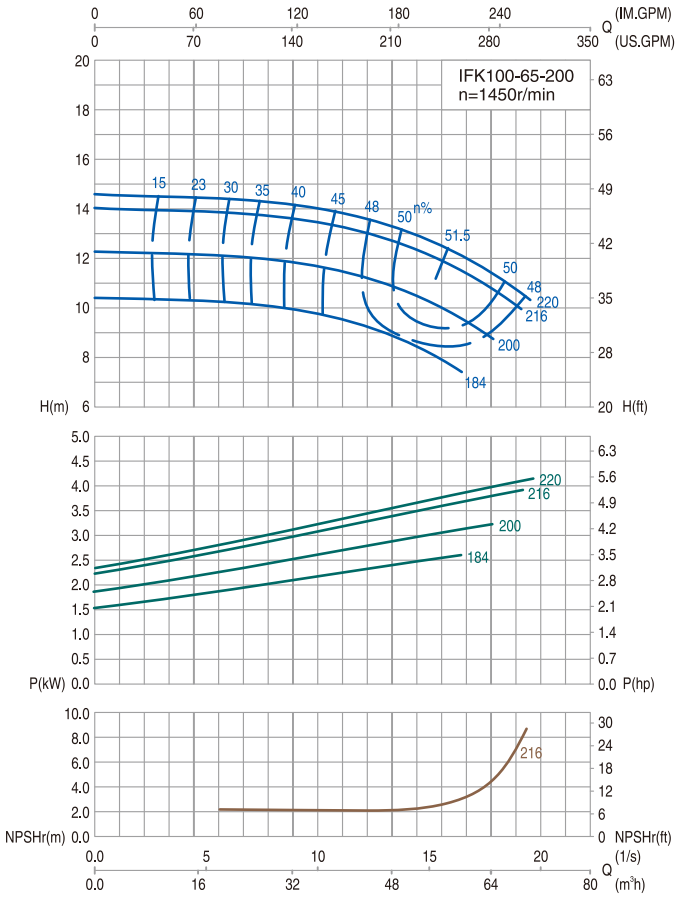
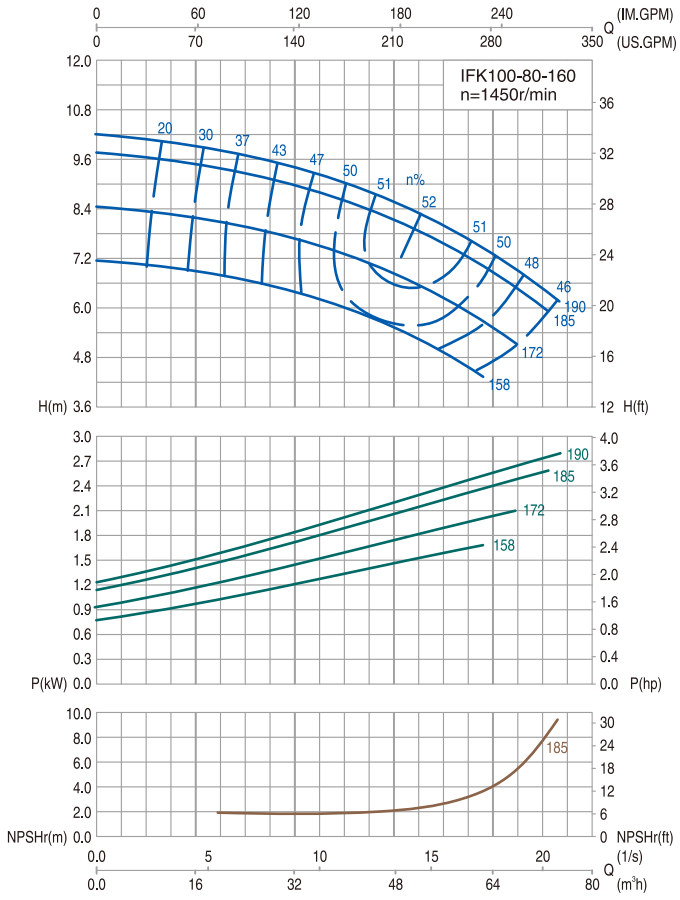


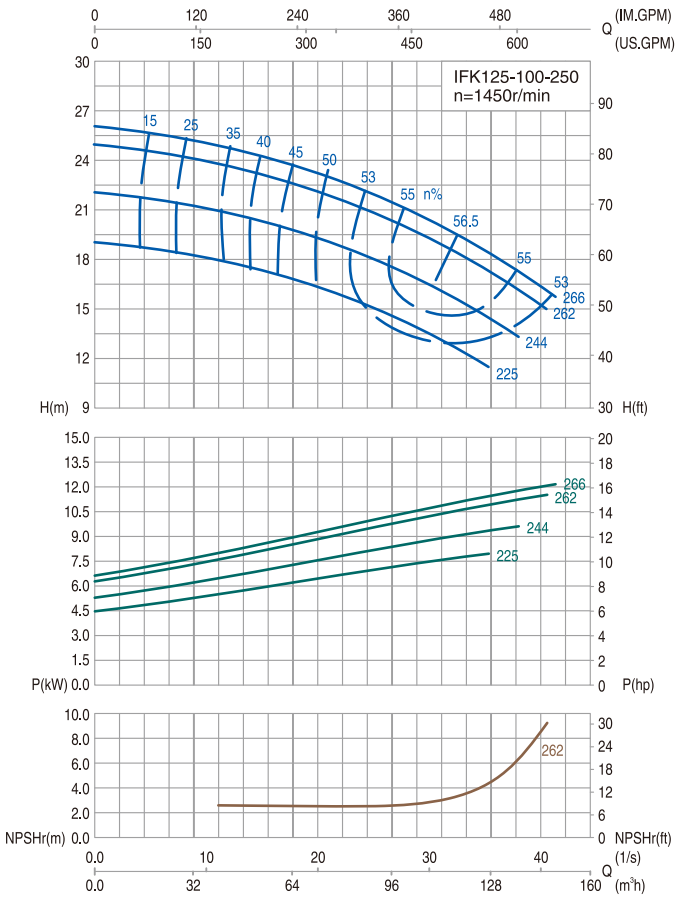
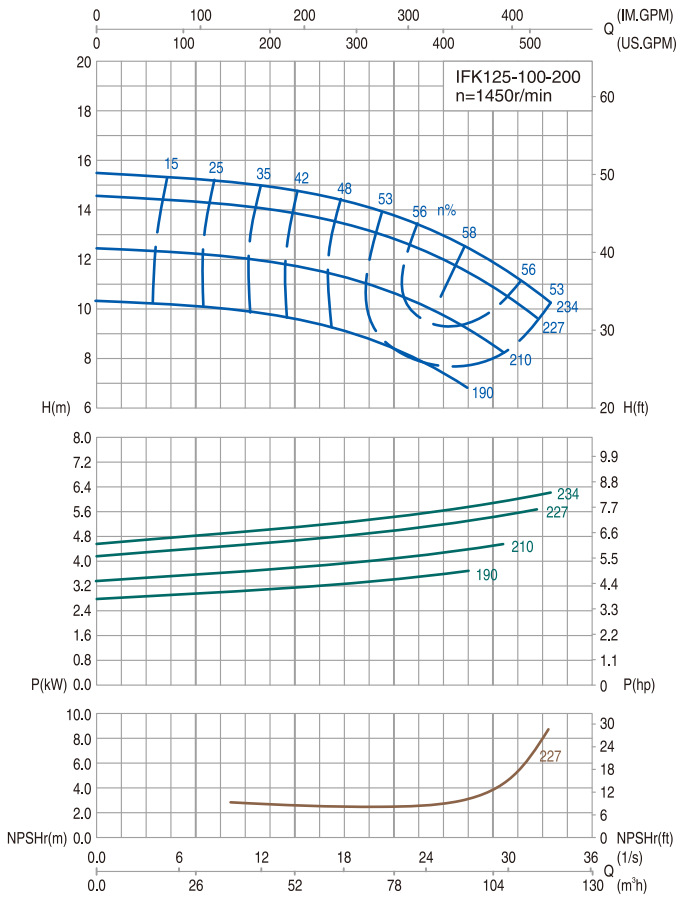
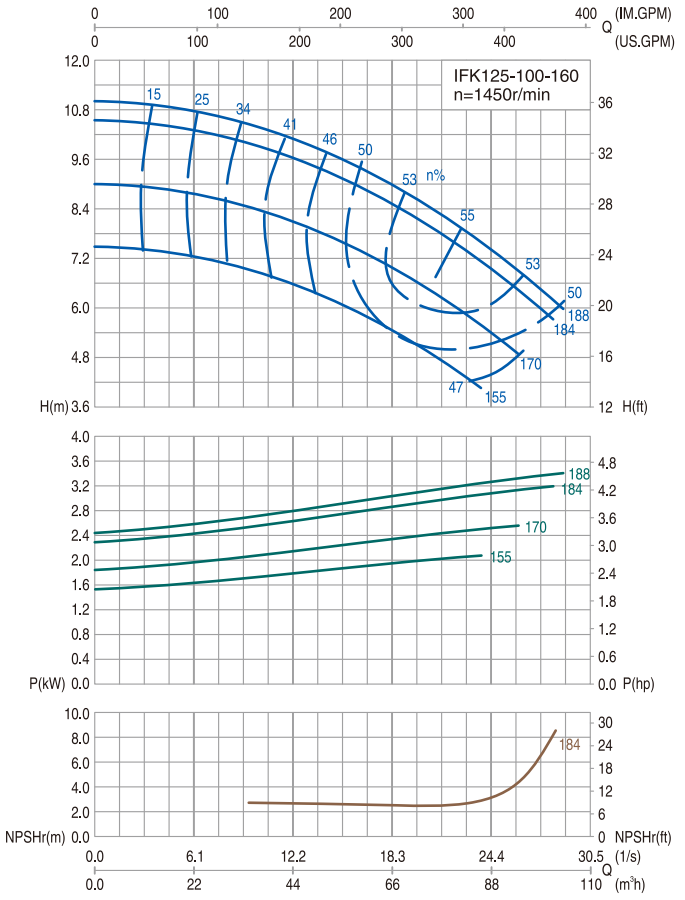
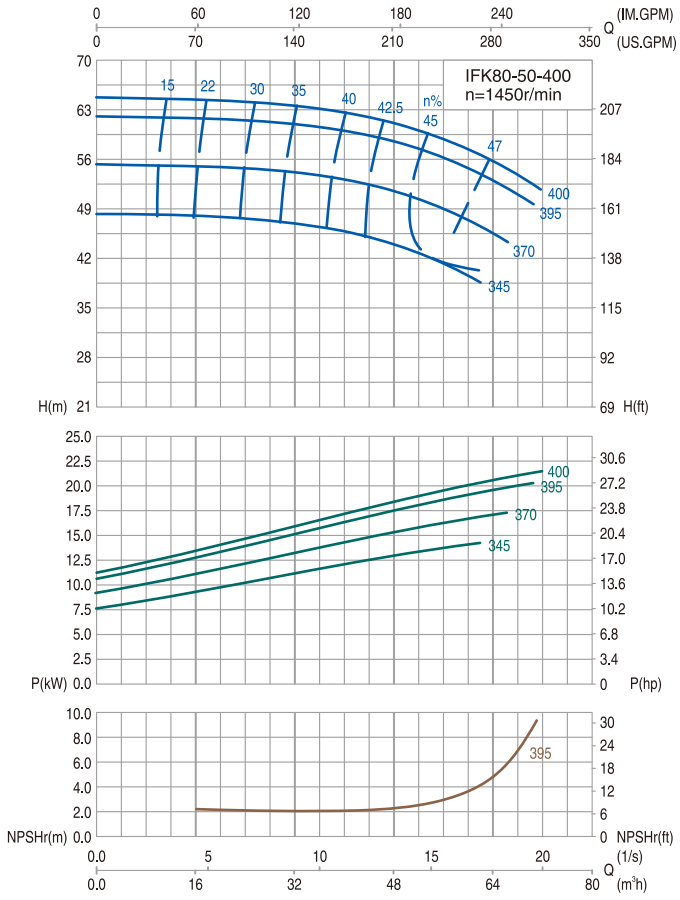


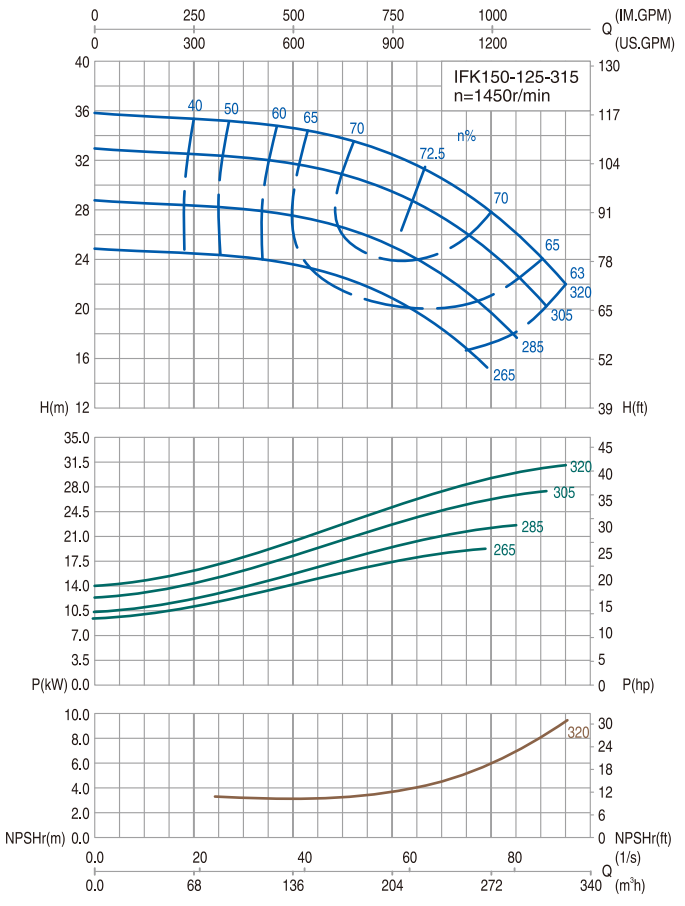
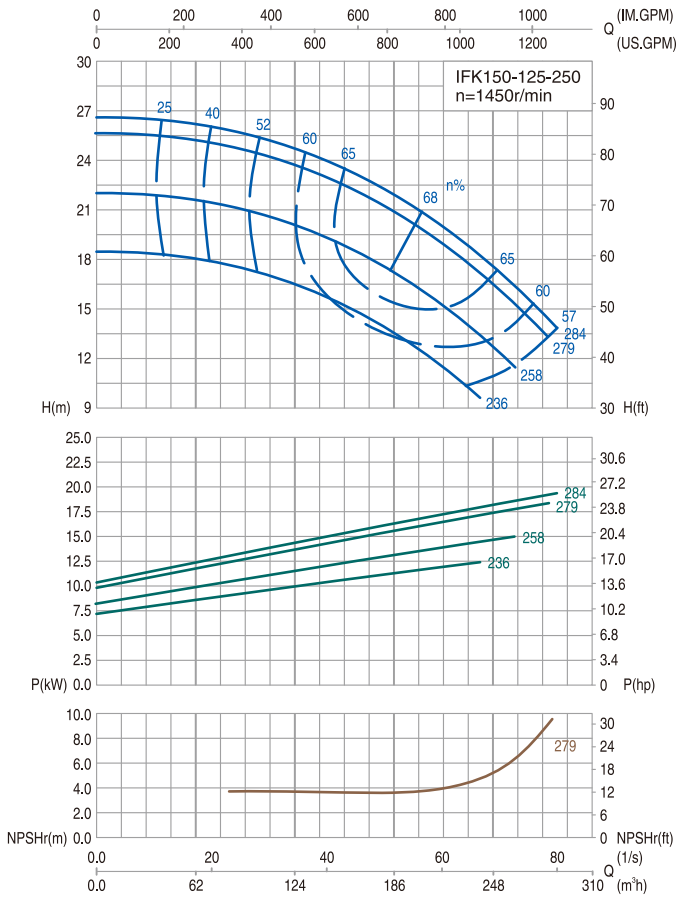
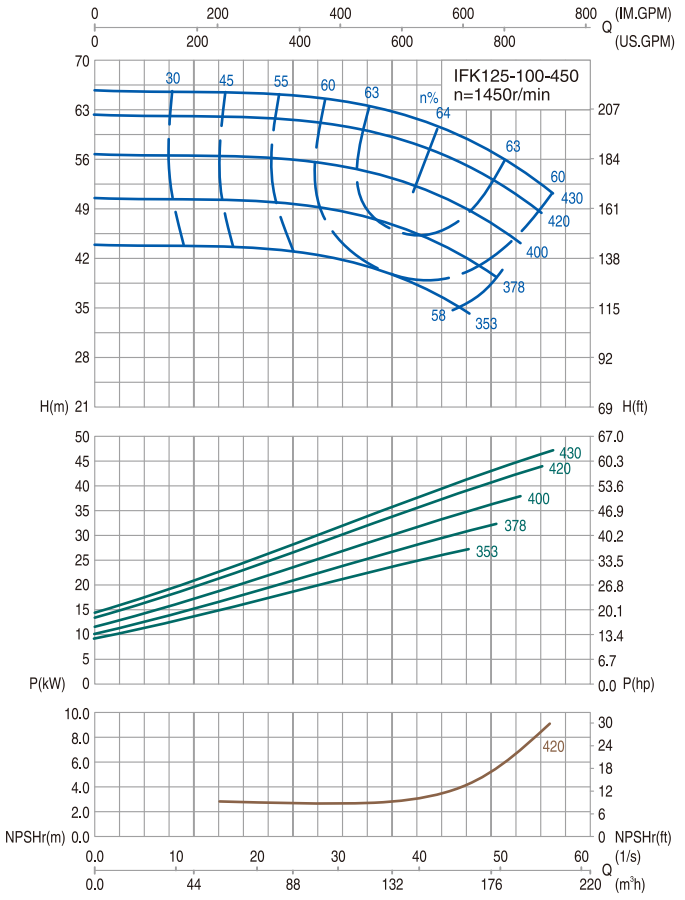
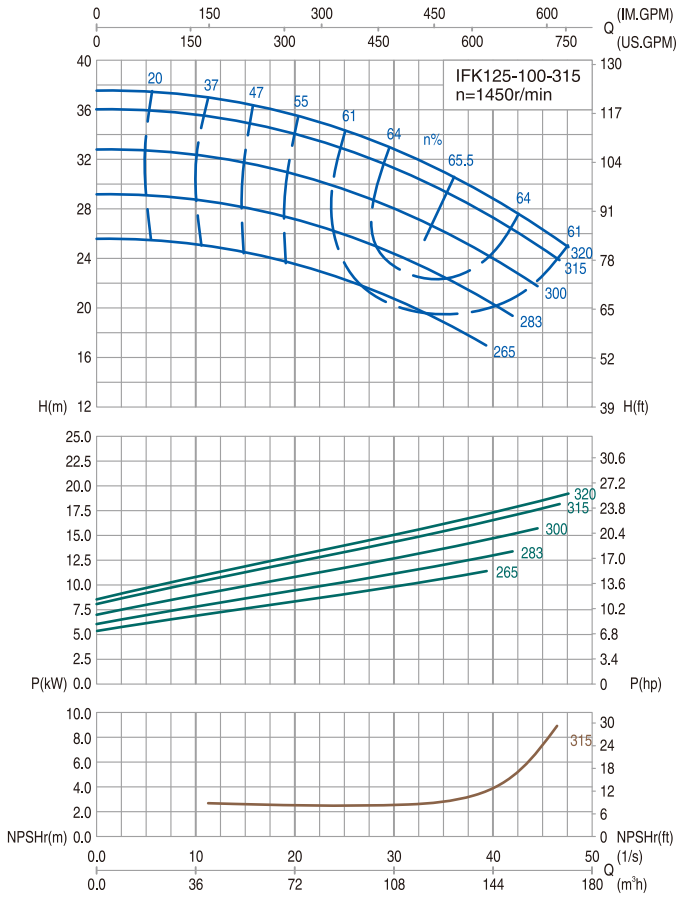


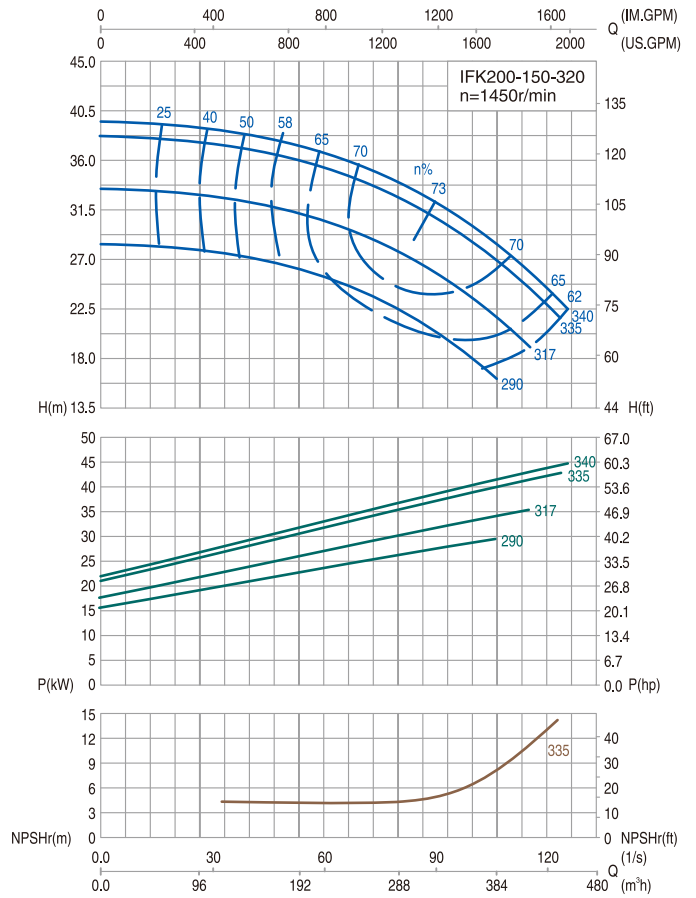
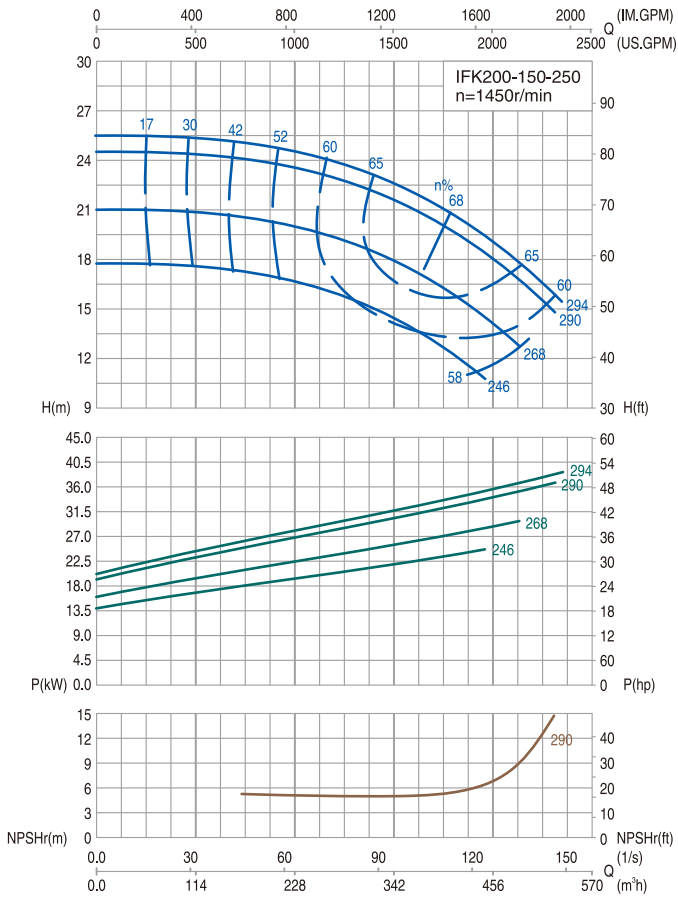
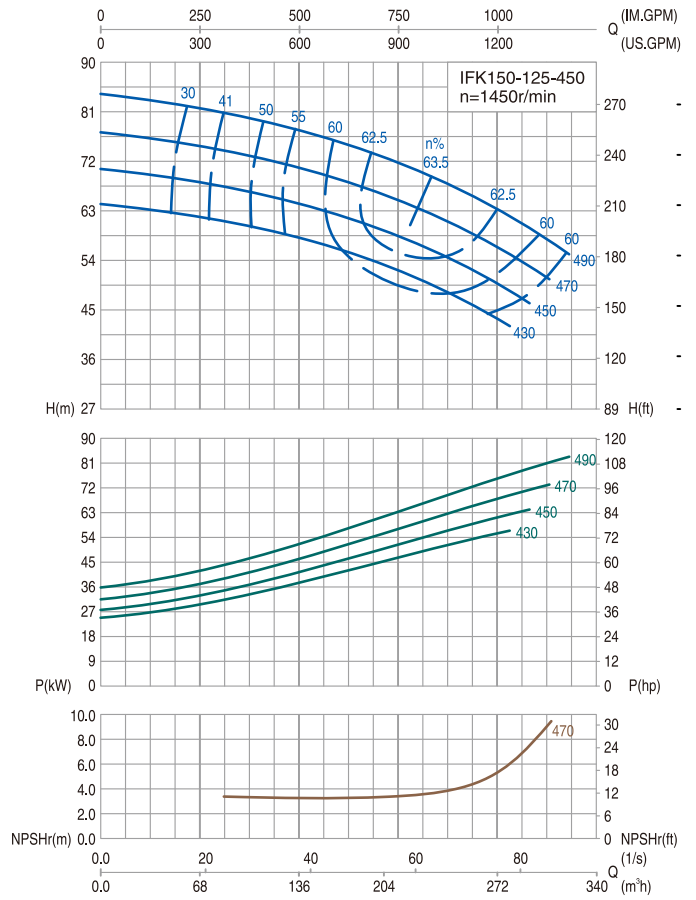
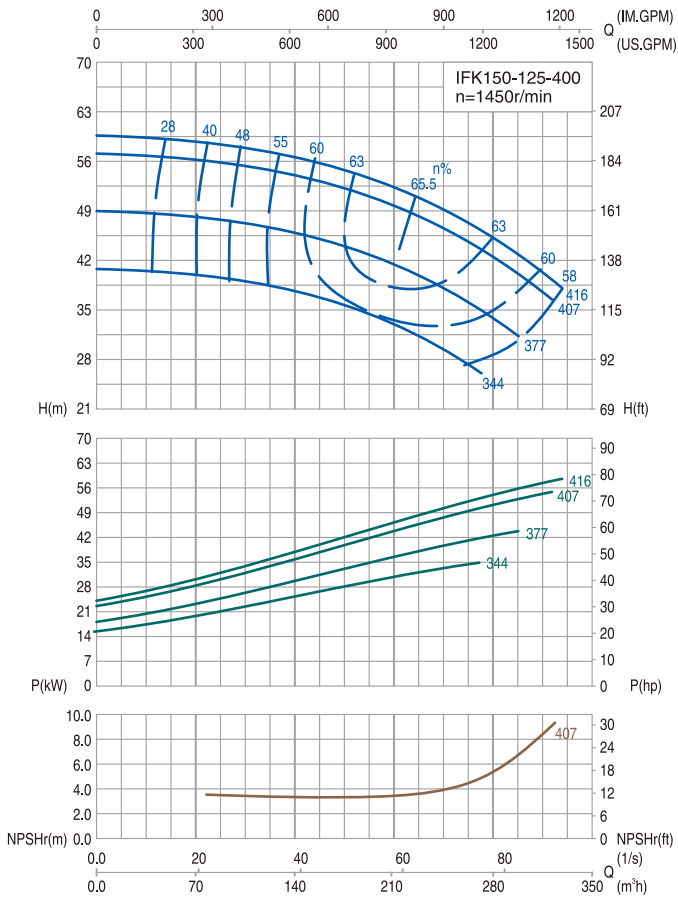


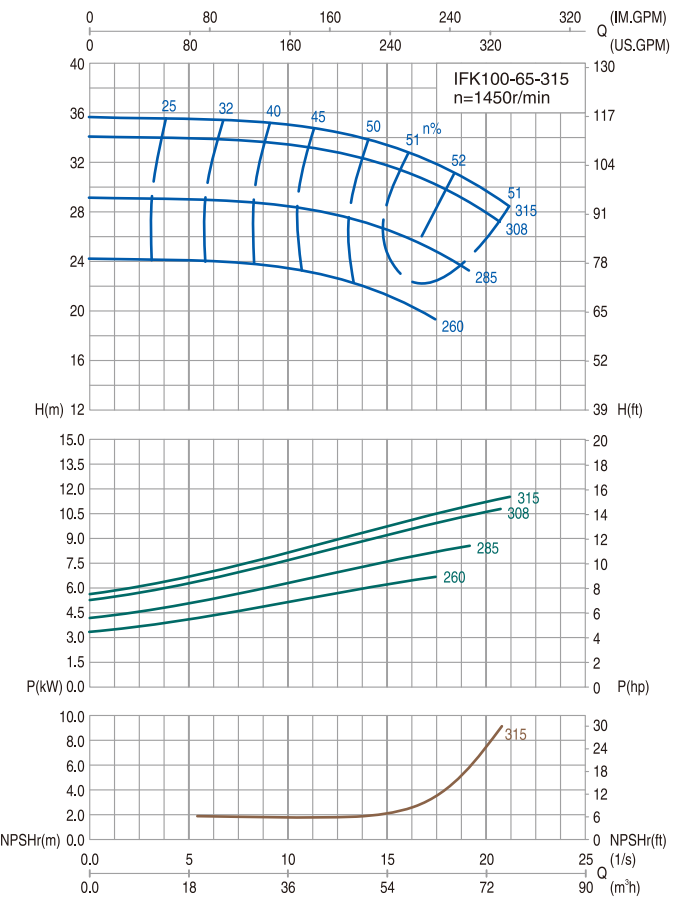
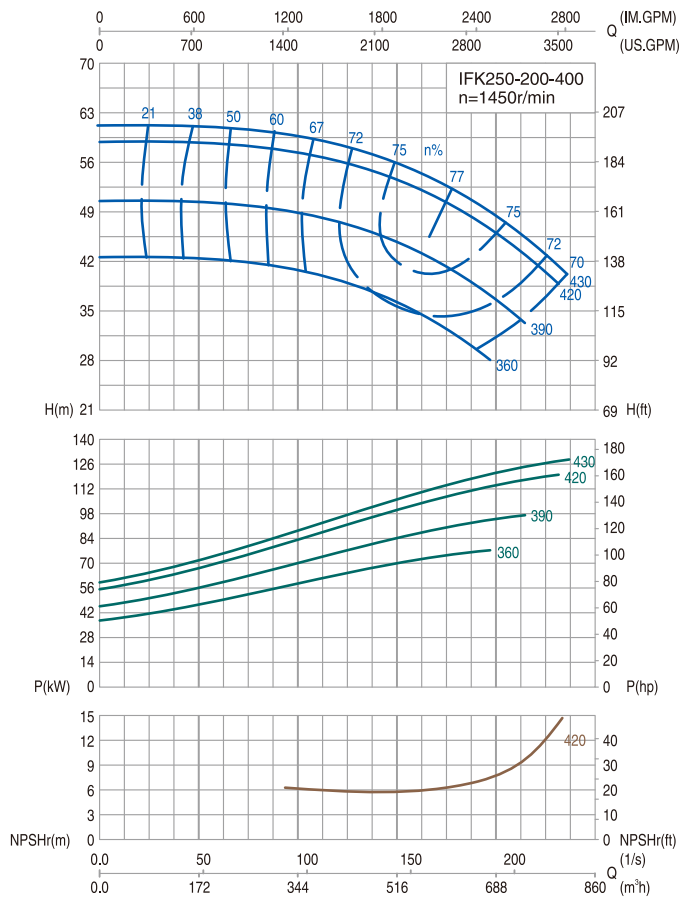
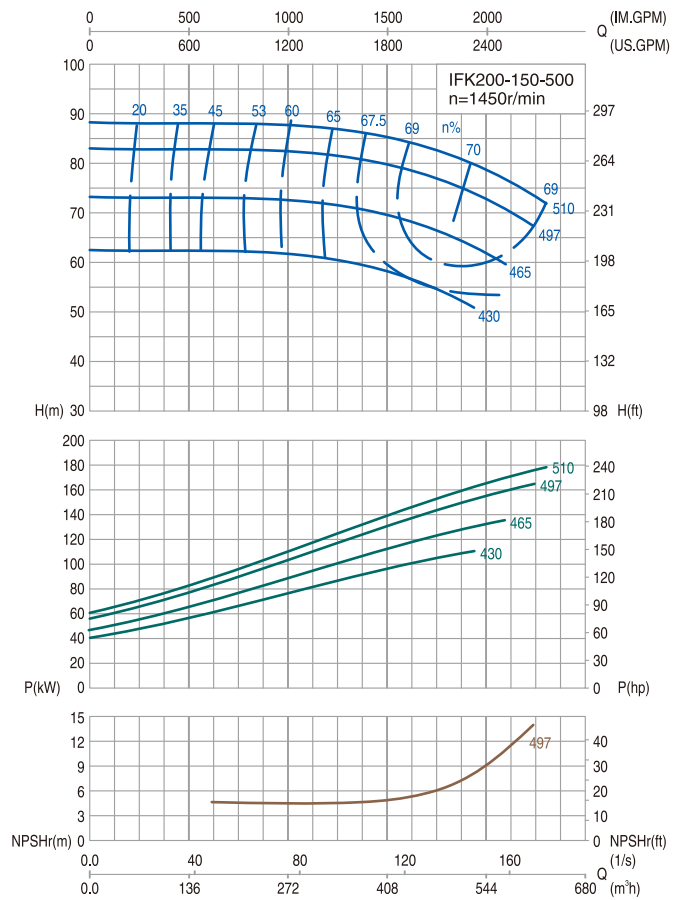
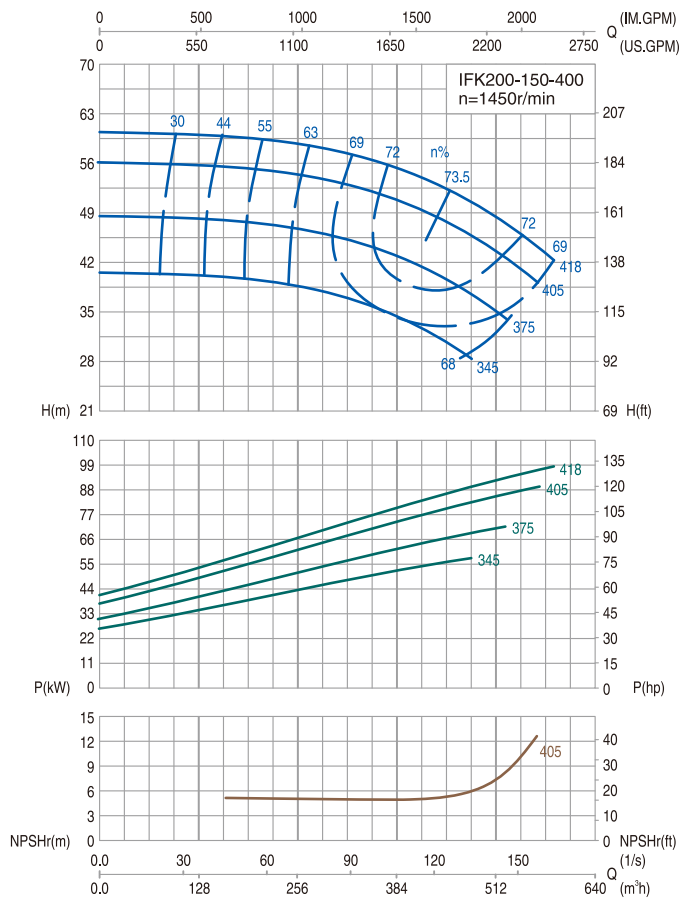


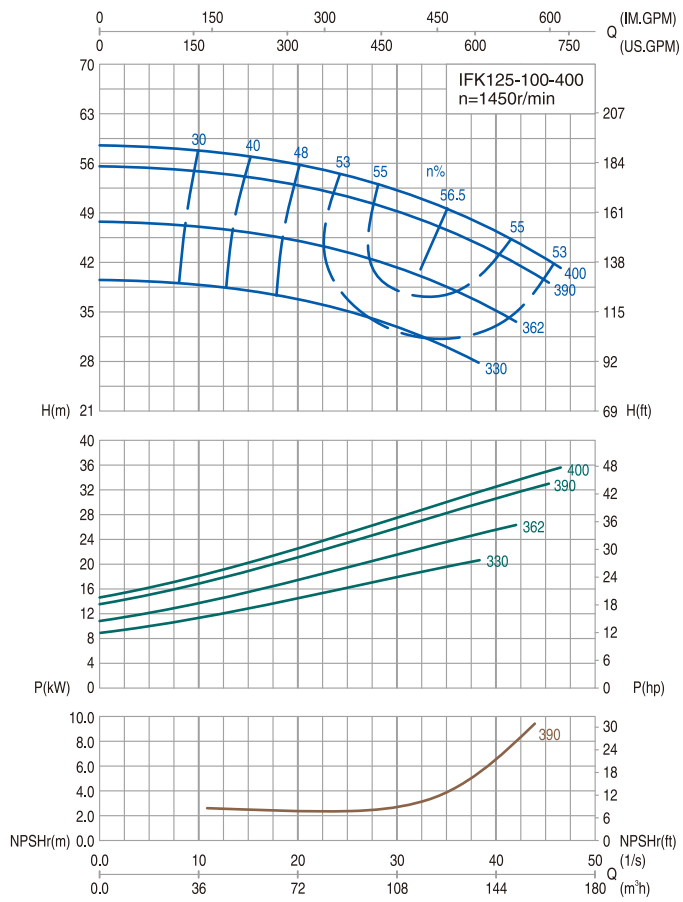






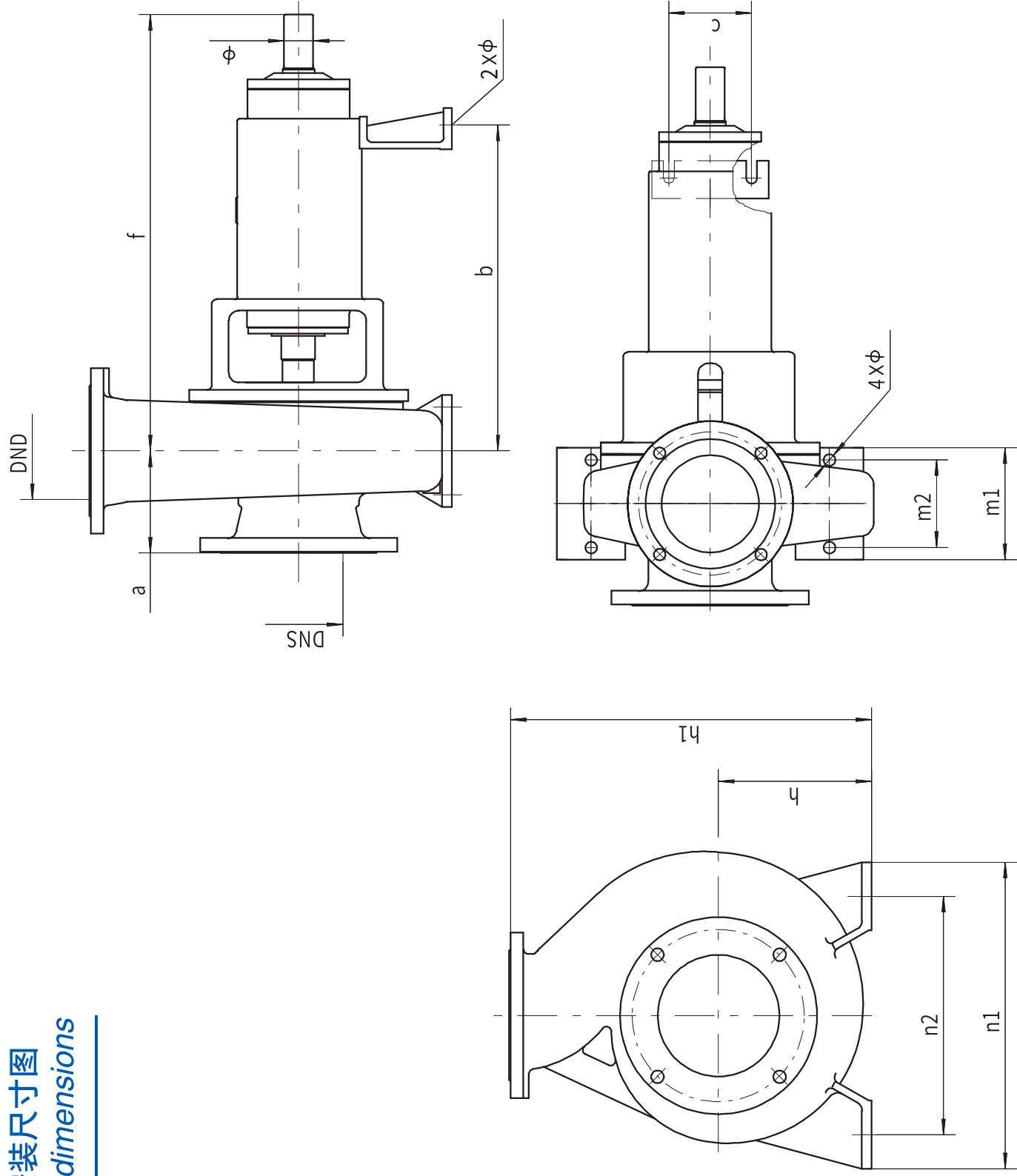






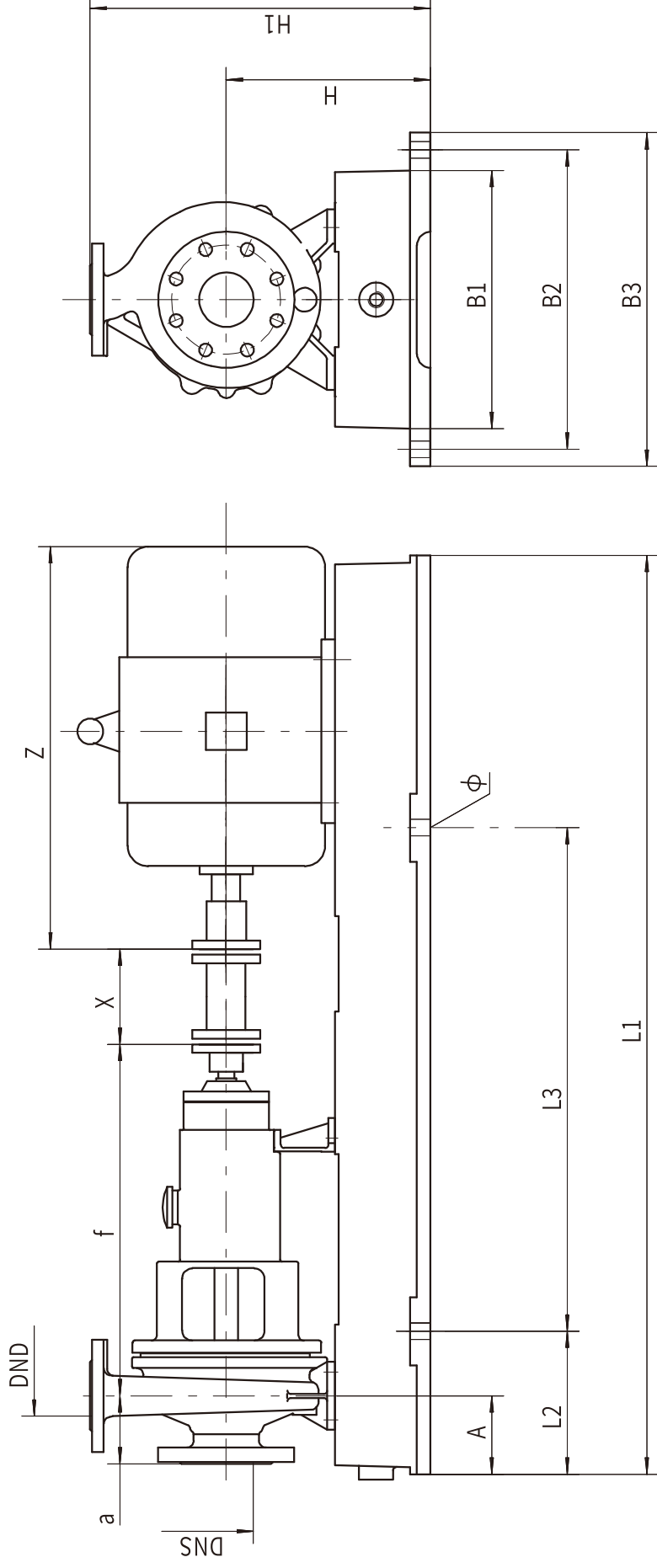
注：以上数据基于常温清水。 Note: above data based on clean water under normal temperature.

泵头安装尺寸图 Pump dimensions



型号 Pump Mode	DNS	DND	h	h1	n1	n2	m1	m2	4*φ	b	c	2*φ	a	f	φ
IFK40-25-125	40	25	132	292											
IFK40-25-160	40	25	132	307											
IFK40-25-200	40	25	160	350											
IFK50-32-125	50	32	132	302											
IFK50-32-160	50	32	132	307											
IFK50-32-200	50	32	160	360	240	190	105	70					110	521	φ24
IFK65-40-200	65	40	160	370											
IFK65-50-125	65	50	132	302											
IFK65-50-160	65	50	132	307											
IFK80-65-125	80	65	132	322											
IFK80-65-160	80	65	160	360											
IFK80-50-200	80	50	160	380											
IFK100-80-125	100	80	160	380	280	212							120		
IFK100-80-150	100	80	160	380									150		
IFK40-25-250	40	25	180	395											
IFK50-32-250	50	32	180	415	320	250	130	95					110	633	
IFK65-40-250	65	40	180	415									120		
IFK80-50-250	80	50	180	420											
IFK100-65-250	100	65	225	540	380	300	160	120	φ18	489			125	685	φ32
IFK100-65-200	100	65	180	430	320	250	130	95	φ14				120		
IFK100-80-160	100	80	180	440	280	212							115	648	
IFK125-100-160	125	100	200	480	360	280	160	120	φ18				130		
IFK125-100-200	125	100	225	515	400	315									
IFK80-50-400	80	50	315	675	490	400	200	150		592			160	828	
IFK100-65-350	100	65	280	630	480	400	150	100	φ24	578			130	813	
IFK125-100-250	125	100	225	565	450	350	185	145	φ18	493			160	689	
IFK125-100-450	125	100	315	725	490					587			170	821	
IFK150-125-250	150	125	280	650						585				819	φ48
IFK150-125-315	150	125	280	640	500	400				570				805	
IFK150-125-350	150	125	315	725			200	150	φ24	580			150	815	
IFK150-125-400	150	125	315	725											
IFK200-150-250	200	150	315	745						602			190	834	
IFK200-150-400	200	150	330	800	550	450				672			170	917	φ60

整泵安装尺寸图 Baseplate dimensions



- 1) 基于膜片联轴器，常规Y系列电动机；
- 2) 具体安装详见公司施工图。

- 1) based on diaphragm couplings, conventional Y series motors;
- 2) specific installation details see company construction drawings.

型号 Pump Model	配用电机 Matched Motor	底座 Base	DNS	DND	L1	L2	L3	B1	B2	B3	H	H1	A	a	f	X	Z	φ
IFK65-40-200	Y160L-2/18.5	6-7	65	40	1540	225	840	410	490	550	320	530	140	110	521	140	700	4*φ28
IFK65-40-250	Y160M-2/15	6-7	65	40	1540	225	840	410	490	550	340	575	95	110	633	140	670	4*φ28
IFK65-40-250	Y160L-2/18.5	6-7	65	40	1540	225	840	410	490	550	340	575	95	110	633	140	700	4*φ28
IFK65-40-250	Y180M-2/22	6-7	65	40	1540	225	840	410	490	550	340	575	95	110	633	140	740	4*φ28
IFK65-50-125	Y100L-2/3	3-3	65	50	1050	170	600	280	350	400	257	427	80	110	521	140	435	4*φ18
IFK65-50-125	Y112M-2/4	4-6	65	50	1260	190	660	340	400	450	257	427	80	110	521	140	470	4*φ24
IFK65-50-125	Y132S-2/5.5, 2/7.5	4-6	65	50	1260	190	660	340	400	450	257	427	80	110	521	140	510	4*φ24
IFK65-50-160	Y132S-2/5.5, 2/7.5	4-6	65	50	1260	190	660	340	400	450	285	460	80	110	521	140	510	4*φ24
IFK65-50-160	Y160M-2/11, 2/15	4-8	65	50	1320	220	660	340	400	450	322	497	80	110	521	140	670	4*φ24
IFK80-50-200	Y160M-2/15	6-7	80	50	1540	225	840	410	490	550	320	540	140	120	521	140	670	4*φ28
IFK80-50-200	Y160L-2/18.5	6-7	80	50	1540	225	840	410	490	550	320	540	140	120	521	140	700	4*φ28
IFK80-50-200	Y200L-2/30, 2/37	7-11	80	50	1620	260	940	460	550	610	350	570	110	120	521	140	790	4*φ28
IFK80-50-250	Y200L-2/30, 2/37	7-10	80	50	1620	260	940	460	550	620	360	600	95	120	633	140	790	4*φ28
IFK80-50-250	Y225M-2/45	7-11	80	50	1620	260	940	460	550	610	370	610	110	120	633	180	855	4*φ28
IFK80-50-400	Y180L-4/22	8-15	80	50	1840	300	600/600	510	600	664	515	875	140	160	828	180	790	6*φ28
IFK80-50-400	Y200L-4/30	8-15	80	50	1840	300	600/600	510	600	664	515	875	140	160	828	180	790	6*φ28
IFK80-50-400	Y225S-4/37	8-15	80	50	1840	300	600/600	510	600	664	515	875	140	160	828	180	830	6*φ28
IFK80-65-125	Y132S-2/5.5, 2/7.5	4-6	80	65	1260	190	660	340	400	450	257	447	80	110	521	140	510	4*φ24
IFK80-65-125	Y160M-2/11, 2/15	4-8	80	65	1320	220	660	340	400	450	322	512	80	110	521	140	670	4*φ24
IFK80-65-160	Y160M-2/11, 2/15	6-7	80	65	1540	225	840	410	490	550	320	500	140	110	521	140	670	4*φ28
IFK80-65-160	Y160L-2/18.5	6-7	80	65	1540	225	840	410	490	550	320	500	140	110	521	140	700	4*φ28
IFK100-65-200	Y132M-4/7.5	5-19	100	65	1350	210	740	380	440	500	320	570	90	120	648	140	560	4*φ24

型号 Pump Model	配用电机 Matched Motor	底座 Base	DNS	DND	L1	L2	L3	B1	B2	B3	H	H1	A	a	f	X	Z	φ
IFK40-25-125	Y90L-2/2.2	3-3	40	25	1050	170	600	280	350	400	257	417	80	110	521	140	390	4*φ18
IFK40-25-125	Y100L-2/3	3-3	40	25	1050	170	600	280	350	400	257	417	80	110	521	140	435	4*φ18
IFK40-25-125	Y112M-2/4	4-6	40	25	1260	190	660	340	400	450	257	417	80	110	521	140	470	4*φ24
IFK40-25-160	Y100L-2/3	3-3	40	25	1050	170	600	280	350	400	257	432	80	110	521	140	435	4*φ18
IFK40-25-160	Y112M-2/4	4-6	40	25	1260	190	660	340	400	450	257	432	80	110	521	140	470	4*φ24
IFK40-25-160	Y132S-2/5.5, 2/7.5	4-6	40	25	1260	190	660	340	400	450	257	432	80	110	521	140	510	4*φ24
IFK40-25-200	Y112M-2/4	4-6	40	25	1260	190	660	340	400	450	285	475	80	110	521	140	470	4*φ24
IFK40-25-200	Y132S-2/5.5, 2/7.5	4-6	40	25	1260	190	660	340	400	450	285	475	80	110	521	140	510	4*φ24
IFK40-25-250	Y132S-2/5.5, 2/7.5	5-19	40	25	1350	210	740	380	440	500	320	535	90	110	633	140	510	4*φ24
IFK40-25-250	Y160M-2/11, 2/15	6-7	40	25	1540	225	840	410	490	550	340	555	100	110	633	140	670	4*φ28
IFK40-25-250	Y160L-2/18.5	6-7	40	25	1540	225	840	410	490	550	340	555	100	110	633	140	700	4*φ28
IFK50-32-125	Y100L-2/3	3-3	50	32	1050	170	600	280	350	400	257	427	80	110	521	140	435	4*φ18
IFK50-32-125	Y112M-2/4	4-6	50	32	1260	190	660	340	400	450	257	427	80	110	521	140	470	4*φ24
IFK50-32-125	Y132S-2/5.5, 2/7.5	4-6	50	32	1260	190	660	340	400	450	257	427	80	110	521	140	510	4*φ24
IFK50-32-160	Y112M-2/4	4-6	50	32	1260	190	660	340	400	450	257	432	80	110	521	140	470	4*φ24
IFK50-32-160	Y132S-2/5.5, 2/7.5	4-6	50	32	1260	190	660	340	400	450	257	432	80	110	521	140	510	4*φ24
IFK50-32-200	Y132S-2/7.5	4-6	50	32	1260	190	660	340	400	450	285	485	80	110	521	140	510	4*φ24
IFK50-32-200	Y160M-2/11, 2/15	6-7	50	32	1540	225	840	410	490	550	320	520	140	110	521	140	670	4*φ28
IFK50-32-200	Y160L-2/18.5	6-7	50	32	1540	225	840	410	490	550	320	520	140	110	521	140	700	4*φ28
IFK50-32-250	Y160M-2/11, 2/15	6-7	50	32	1540	225	840	410	490	550	340	575	100	110	633	140	670	4*φ28
IFK50-32-250	Y160L-2/18.5	6-7	50	32	1540	225	840	410	490	550	340	575	100	110	633	140	700	4*φ28
IFK65-40-200	Y160M-2/11, 2/15	6-7	65	40	1540	225	840	410	490	550	320	530	140	110	521	140	670	4*φ28

型号 Pump Model	配用电机 Matched Motor	底座 Base	DNS	DND	L1	L2	L3	B1	B2	B3	H	H1	A	a	f	X	Z	φ
IFK125-100-450	Y225S-4/37	8-15	125	100	1840	300	600/600	510	600	664	515	925	140	160	821	180	830	6*φ28
IFK125-100-450	Y250M-4/55	9-16	125	100	2120	330	600/600	580	670	730	515	925	140	160	821	180	915	6*φ28
IFK125-100-450	Y280S-4/75	9-16	125	100	2120	330	600/600	580	670	730	515	925	140	160	821	180	985	6*φ28
IFK150-125-250	Y180L-4/22	8-15	150	125	1840	300	600/600	510	600	664	480	850	160	170	819	180	790	6*φ28
IFK150-125-250	Y200L-4/30	8-15	150	125	1840	300	600/600	510	600	664	480	850	160	170	819	180	790	6*φ28
IFK150-125-250	Y225S-4/37	8-15	150	125	1840	300	600/600	510	600	664	480	850	160	170	819	180	830	6*φ28
IFK150-125-315	Y200L-4/30	8-15	150	125	1840	300	600/600	510	600	664	480	840	140	150	805	180	790	6*φ28
IFK150-125-315	Y225S-4/37	8-15	150	125	1840	300	600/600	510	600	664	480	840	140	150	805	180	830	6*φ28
IFK150-125-315	Y225M-4/45	8-15	150	125	1840	300	600/600	510	600	664	480	840	140	150	805	180	855	6*φ28
IFK150-125-350	Y250M-4/55	9-16	150	125	2120	330	600/600	580	670	730	515	925	140	150	815	180	915	6*φ28
IFK150-125-350	Y280S-4/75	9-16	150	125	2120	330	600/600	580	670	730	515	925	140	150	815	180	985	6*φ28
IFK150-125-350	Y280M-4/90	9-16	150	125	2120	330	600/600	580	670	730	515	925	140	150	815	180	1035	6*φ28
IFK150-125-400	Y250M-4/55	9-16	150	125	2120	330	600/600	580	670	730	515	925	140	150	815	180	915	6*φ28
IFK150-125-400	Y280S-4/75	9-16	150	125	2120	330	600/600	580	670	730	515	925	140	150	815	180	985	6*φ28
IFK150-125-400	Y280M-4/90	9-16	150	125	2120	330	600/600	580	670	730	515	925	140	150	815	180	1035	6*φ28
IFK200-150-250	Y225M-4/45	9-16	200	150	2120	330	600/600	580	670	730	515	945	140	190	836	180	855	6*φ28
IFK200-150-250	Y250M-4/55	9-16	200	150	2120	330	600/600	580	670	730	515	945	140	190	836	180	915	6*φ28
IFK200-150-250	Y280S-4/75	9-16	200	150	2120	330	600/600	580	670	730	515	945	140	190	836	180	986	6*φ28
IFK200-150-400	Y280M-4/90	10-16	200	150	2250	375	750/750	660	750	810	530	1000	140	170	917	180	1035	6*φ28
IFK200-150-400	Y315S-4/110	10-16A	200	150	2550	375	750/750	660	750	810	530	1000	140	170	917	180	1290	6*φ28
IFK200-150-400	Y315M-4/132	10-16A	200	150	2550	375	750/750	660	750	810	530	1000	140	170	917	180	1320	6*φ28
IFK200-150-400	Y315L1-4/160	10-16A	200	150	2550	375	750/750	660	750	810	530	1000	140	170	917	180	1320	6*φ28

型号 Pump Model	配用电机 Matched Motor	底座 Base	DNS	DND	L1	L2	L3	B1	B2	B3	H	H1	A	a	f	X	Z	φ
IFK100-65-200	Y200L-2/30, 2/37	7-10	100	65	1620	260	940	460	550	620	360	610	90	120	648	140	790	4*φ28
IFK100-65-200	Y225M-2/45	7-11	100	65	1620	260	940	460	550	610	370	620	110	120	648	180	855	4*φ28
IFK100-65-250	Y225M-2/45	8-13	100	65	1840	300	600/600	510	600	664	425	740	120	125	685	180	855	6*φ28
IFK100-65-250	Y250M-2/55	8-13	100	65	1840	300	600/600	510	600	664	425	740	120	125	685	180	915	6*φ28
IFK100-65-250	Y280S-2/75	9-14	100	65	2120	330	600/600	580	670	730	425	740	120	125	685	180	985	6*φ28
IFK100-65-350	Y160L-4/15	8-15	100	65	1840	300	600/600	510	600	664	480	830	160	130	813	140	700	6*φ28
IFK100-65-350	Y180M-4/18.5	8-15	100	65	1840	300	600/600	510	600	664	480	830	160	130	813	140	740	6*φ28
IFK100-65-350	Y180L-4/22	8-15	100	65	1840	300	600/600	510	600	664	480	830	160	130	813	180	790	6*φ28
IFK100-80-125	Y160M-2/11, 2/15	6-7	100	80	1540	225	840	410	490	550	320	540	140	150	521	140	670	4*φ28
IFK100-80-125	Y160L-2/18.5	6-7	100	80	1540	225	840	410	490	550	320	540	140	150	521	140	700	4*φ28
IFK100-80-160	Y160M-2/15	6-7	100	80	1540	225	840	410	490	550	340	600	100	115	648	140	670	4*φ28
IFK100-80-160	Y160L-2/18.5	6-7	100	80	1540	225	840	410	490	550	340	600	100	115	648	140	700	4*φ28
IFK100-80-160	Y180M-2/22	6-7	100	80	1540	225	840	410	490	550	340	600	100	115	648	140	740	4*φ28
IFK125-100-160	Y132M-4/7.5	5-19	125	100	1350	210	740	380	440	500	340	620	110	130	648	140	560	4*φ24
IFK125-100-160	Y180M-2/22	7-10	125	100	1620	260	940	460	550	620	380	660	110	130	648	140	740	4*φ28
IFK125-100-160	Y200L-2/30, 2/37	7-10	125	100	1620	260	940	460	550	620	380	660	110	130	648	140	790	4*φ28
IFK125-100-200	Y200L-2/37	7-10	125	100	1620	260	940	460	550	620	405	695	110	130	648	140	790	4*φ28
IFK125-100-200	Y225M-2/45	7-10	125	100	1620	260	940	460	550	620	405	695	110	130	648	180	855	4*φ28
IFK125-100-200	Y250M-2/55	8-13	125	100	1840	300	600/600	510	600	664	425	715	120	130	648	180	915	6*φ28
IFK125-100-250	Y250M-2/55	8-13	125	100	1840	300	600/600	510	600	664	425	765	120	130	689	180	915	6*φ28
IFK125-100-250	Y280S-2/75	9-14	125	100	2120	330	600/600	580	670	730	425	765	120	130	689	180	985	6*φ28
IFK125-100-250	Y280M-2/90	9-14	125	100	2120	330	600/600	580	670	730	425	765	120	130	689	180	1035	6*φ28